

OPERATION MANUAL

MBP-100MP Series
Multi Format Player

S

MBP-100MP64G
MBP-100MP128G

2nd Edition

Edition Revision History

Edit.	Rev.	Date	Description	Section/Page
2	-	2012/02/03		




-
- ※ **MediaConcierge** is a trademark of FOR-A Company Limited.
 - ※ **XDCAM** is a trademark of Sony Corporation.
 - ※ **AVC-Intra** and **DVCPRO** are trademarks of Panasonic Corporation.
 - ※ **AVCHD** is a trademark or registered trademark of Panasonic Corporation and Sony Corporation.
 - ※ **GF** is a trademark of Toshiba Corporation
 - ※ **QuickTime and the QuickTime logo** are trademarks of Apple Inc., registered in the U.S. and other countries.
 - ※ **HDV** is a trademark or registered trademark of Sony Corporation and Victor Company of Japan Limited (JVC)

* All other trademarks are trademarks or registered trademarks of their respective owners.




Precautions

Important Safety Warnings




[Power]

 Caution	Operate unit only on the specified supply voltage.
	Disconnect power cord by connector only. Do not pull on cable portion.
 Stop	Do not place or drop heavy or sharp-edged objects on power cord. A damaged cord can cause fire or electrical shock hazards. Regularly check power cord for excessive wear or damage to avoid possible fire / electrical hazards.


[Grounding]

 Caution	Ensure unit is properly grounded at all times to prevent electrical shock hazard.
 Hazard	Do not ground the unit to gas lines, units, or fixtures of an explosive or dangerous nature.
 Caution	Ensure power cord is firmly plugged into AC outlet.




[Operation]

 Hazard	Do not operate unit in hazardous or potentially explosive atmospheres. Doing so could result in fire, explosion, or other dangerous results.
 Hazard	Do not allow liquids, metal pieces, or other foreign materials to enter the unit. Doing so could result in fire, other hazards, or unit malfunction.
	If foreign material does enter the unit, turn power off and disconnect power cord immediately . Remove material and contact authorized service representative if damage has occurred.


[Transportation]

 Caution	Handle with care to avoid shocks in transit. Shocks may cause malfunction. When you need to transport the unit, use the original packing materials or alternate adequate packing.
--	--


[Circuitry Access]

 Stop	<p>Do not remove covers, panels, casing, or access circuitry with power applied to the unit! Turn power off and disconnect power cord prior to removal. Internal servicing / adjustment of unit should only be performed by qualified personnel.</p>
 Stop	<p>Do not touch any parts / circuitry with a high heat factor. Capacitors can retain enough electric charge to cause mild to serious shock, even after power is disconnected. Capacitors associated with the power supply are especially hazardous. Avoid contact with any capacitors.</p>
 Hazard	<p>Unit should not be operated or stored with cover, panels, and / or casing removed. Operating unit with circuitry exposed could result in electric shock / fire hazards or unit malfunction.</p>


[Potential Hazards]

 Caution	<p>If abnormal smells or noises are noticed coming from the unit, turn power off immediately and disconnect power cord to avoid potentially hazardous conditions. If problems similar to above occur, contact authorized service representative before attempting to again operate unit.</p>
--	---

[Rack Mount Brackets, Ground Terminal, and Rubber Feet]

 Caution	<p>To rack mount or ground the unit, or to install rubber feet, do not use screws or materials other than those supplied. Otherwise, it may cause damage to the internal circuits or components of the unit. If you remove the rubber feet attached on the unit, do not reinsert the screws securing the rubber feet.</p>
---	---

[Consumables]

 Caution	<p>The consumables used in unit must be replaced periodically. For further details on which parts are consumables and when they should be replaced, refer to the specifications at the end of the Operation Manual. Since the service life of the consumables varies greatly depending on the environment in which they are used, they should be replaced at an early date. For details on replacing the consumables, contact your dealer.</p>
--	--

Upon Receipt

Unpacking

MBP-100MP units and their accessories are fully inspected and adjusted prior to shipment. Operation can be performed immediately upon completing all required connections and operational settings.

Check your received items against the packing lists below.

ITEM	QTY	REMARKS
MBP-100MP64G MBP-100MP128G	1	
AC Cord	1 set	
Rack Mount Brackets	1 set	For EIA standard rack mounting
Rubber Feet	1 set	
Operation Manual	2	MBP-100MP operation manual (this manual) MCS-MBPPON operation manual

IMPORTANT

Wait **at least 10 seconds** before turning the MBP-100MP back on after powering off.

Check

Check to ensure no damage has occurred during shipment. If damage has occurred, or items are missing, inform your supplier immediately.

In order to verify that you have received a correct product, please check the model number printed on the label attached on the rear panel at the lower right corner of the product as shown below.

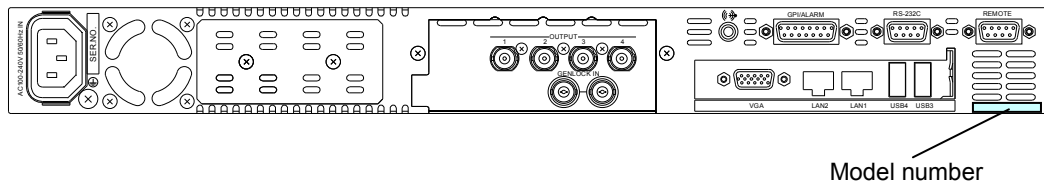


Table of Contents

1. Prior to Starting	1
1-1. Welcome	1
1-2. Features	1
1-3. Notes on Using The MBP-100MP	1
2. Panel Descriptions	2
2-1. Front Panel.....	2
2-2. Rear Panel	3
2-3. Serial Interfaces	4
2-3-1. REMOTE	4
2-3-2. RS-232C	4
2-4. Parallel Interface	5
3. Connection	7
3-1. Genlock Settings	8
4. How to Change Network Settings.....	10
4-1. Connecting Monitor, Keyboard, and Mouse	10
4-2. Disabling Write-Protection	10
4-3. Changing the Computer Name.....	12
4-4. Changing the IP Address.....	14
4-5. Enabling Write-Protection.....	15
5. Specifications and Dimensions.....	16
5-1. Unit Specifications.....	16
5-2. External Dimensions	17
Appendix. How to Reset BIOS	18
1. Opening the BIOS Setup Menu	18
2. Setting Procedure.....	19

1. Prior to Starting

1-1. Welcome

Congratulations! By purchasing MBP-100MP Multi Format Player you have entered the world of FOR-A and its many innovative products. Thank you for your patronage and we hope you will turn to FOR-A products again and again to satisfy your video and audio needs.

FOR-A provides a wide range of products, from basic support units to complex system controllers, which have been increasingly joined by products for computer video based systems. Whatever your needs, talk to your FOR-A representative. We will do our best to be of continuing service to you.

1-2. Features

The MBP-100MP is a 1RU size multi-format player with an SSD drive, offering HD-SDI output of miscellaneous files. It uses plug-ins to support various file formats, including MXF files like XDCAM, P2 and GF, and video files like HDV and AVCHD.

It can be very useful and reliable for recording materials for video servers, CM or Program banks.

- Transfers complete video packages created by VTR or NLE systems.
- Material registration via network
- Various media files stored on the MBP-100MP system can be output via baseband signals.
- Supported file formats are provided in plug-in form and more will be added as needed.
- Up to 8 ch embedded audio output
- Uses SSD for recorded media, resistant to vibration, yielding stable video.
- Material check on a connected touch panel.
- Play, Stop, Pause, FF, REW, CueUp and One-frame Forward / Back (depending on format)
- Proc Amp and gain control function for video and audio output (Video Level, Chroma Level, Black Level, Chroma Phase and Audio Level)

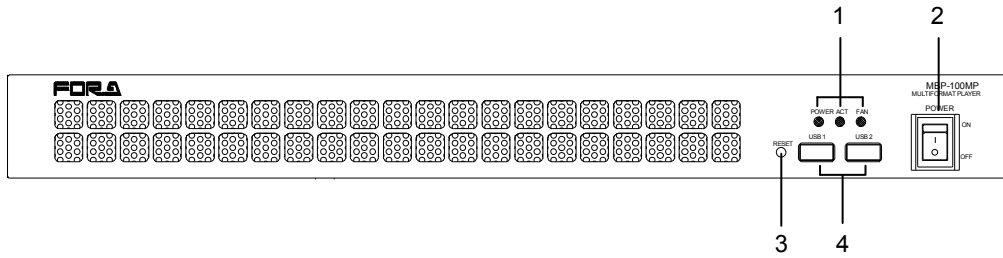
1-3. Notes on Using The MBP-100MP

Please note the following:

- EWF (Enhanced Write Filter) must not be disabled when using the MBP-100MP.
Powering the MBP-100MP on or off while EWF is disabled may corrupt or damage files.
- The C drive of the MBP-100MP is write-protected.
Do not create folders or data in the C drive.
Writing in the C drive may cause Windows to hang up.
- The MBP-100MP has the Windows Operation System (Microsoft Windows XP Embedded) installed and customized.
Do not install applications that are not required.

2. Panel Descriptions

2-1. Front Panel

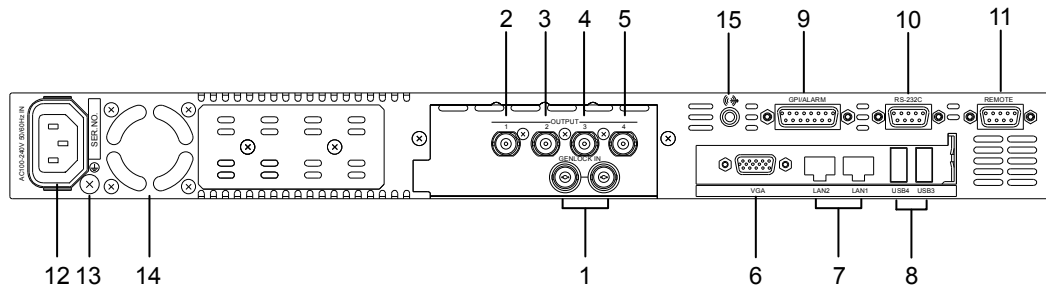


No.	Name	Description		
1	Status Indicators	POWER	Lit green	Power is supplied to the unit.
			Unlit	Power is not supplied to the unit.
		ACT	Not used	
		FAN	Unlit	All cooling fans are operating properly.
Lit red	One or more fans have failed. Power off the unit and replace the failed fan, if necessary.			
2	Power switch	Switch used to turn the unit ON / OFF. Power indicator will light up green when the power switch is turned ON. It takes about 5 seconds for the indicator to light. Wait at least 10 seconds to turn ON again after the power switch is turned OFF.		
3	USB1 USB2	Used to connect USB devices (USB2.0)		
4	RESET	If the POWER indicator does not light up green in 5 seconds after the power switch is turned on, press the RESET switch (Not for normal use.).		

IMPORTANT

If the FAN indicator lights up red, there is a fan failure. Turn off the MBP-100MP and contact your retailer.

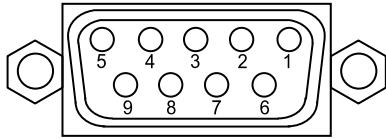
2-2. Rear Panel



No.	Name	Description
1	GENLOCK	For external reference signal input (Black Burst signal or Tri-level sync signal). Either one of two connectors can be used to input the reference signal. If one connector is used to input a reference signal, the other is used as a loop through output to pass through the signal. If the loop through output is not used, terminate the connector with 75 ohm terminator.
2	OUTPUT 1	All outputs from OUTPUT1 to 4 provide the same video signal.
3	OUTPUT 2	
4	OUTPUT 3	
5	OUTPUT 4	
6	VGA	For output to a VGA monitor. (15-pin mini D-sub)
7	LAN1 LAN2	For connection to a computer Ethernet port. (100BASE-TX/1000BASE-T, RJ-45) (1000BASE-T recommended)
8	USB3 USB4	For connection to USB devices (USB2.0)
9	GPI / ALARM	For power / fan alarm output and the GPI input/output. (15-pin D-sub, female)
10	RS-232C	For RS232C serial control. (9-pin D-sub ,male)
11	REMOTE	For RS-422 serial control ((9-pin D-sub ,female)
12	AC IN	For connection to an AC power source via the supplied accessory cord. (100-240 V AC 50/60 Hz)
13	Ground Terminal	For grounding the unit to protect operators against static electricity and / or electrical shock.
14	Cooling Fan	For cooling the unit to prevent overheating. Do not block the vent with other equipment or objects.
15	Audio out	Audio connector for monitoring audio while previewing video. Compliant to Intel High Definition Audio, 2ch (Realtek ALC262)

2-3. Serial Interface

2-3-1. REMOTE

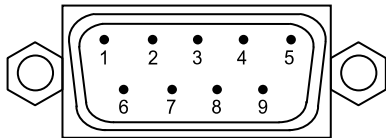


9-pin D-sub, female
inch type screws

◆ Connector Pin Assignment

Pin No.	Signal	I/O	Description
1	FG	-	Frame ground
2	TX-	Out	Transmit data (-)
3	RX+	In	Receive data (+)
4	SG		Signal ground
5	NC		No connection
6	SG		Signal ground
7	TX+	Out	Transmit data (+)
8	RX-	In	Receive data (-)
9	FG		Frame ground

2-3-2. RS-232C

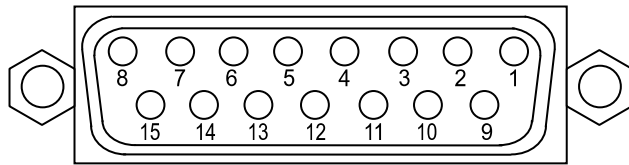


9-pin D-sub, male
inch type screws

◆ Connector Pin Assignment

Pin No.	Signal	I/O	Description
1	DCD	In	Data carrier detect
2	RXD	In	Received data
3	TXD	Out	Transmitted data
4	DTR	Out	Data terminal ready
5	GND	—	Signal ground
6	DSR	In	Data set ready
7	RTS	Out	Request to send
8	CTS	In	Clear to send
9	RI	In	Ring indicator

2-4. Parallel Interface



15-pin D-sub, female
Inch type screws

◆ Connector Pin Assignment

Pin No.	Signal	I/O	Description
1	GND	—	Signal ground
2	POW ALARM	Out	Power alarm output (*1)
3	FAN ALARM	Out	Fan alarm output (*1)
4	NC	—	Not used
5	GPI IN3	In	GPI input (*2)
6	GPI IN2	In	GPI input (*2)
7	GPI IN1	In	GPI input (*2)
8	+5VOUT	Out	+5 V DC output
9	COMMON	—	Power alarm output, common (*1)
10	NC	—	Not used
11	NC	—	Not used
12	GPI OUT3	Out	GPI output (*3)
13	GPI OUT2	Out	GPI output (*3)
14	GPI OUT1	Out	GPI output (*3)
15	GND	—	Signal ground
—	—	—	—

* The maximum current rating for +5 V output is 200 mA.

(*1) See "Alarm Output Circuit" below.

(*2) See "GPI IN Circuit" in the next page.

(*3) See "GPI OUT Circuit" in the next page.

Alarm Output Circuit

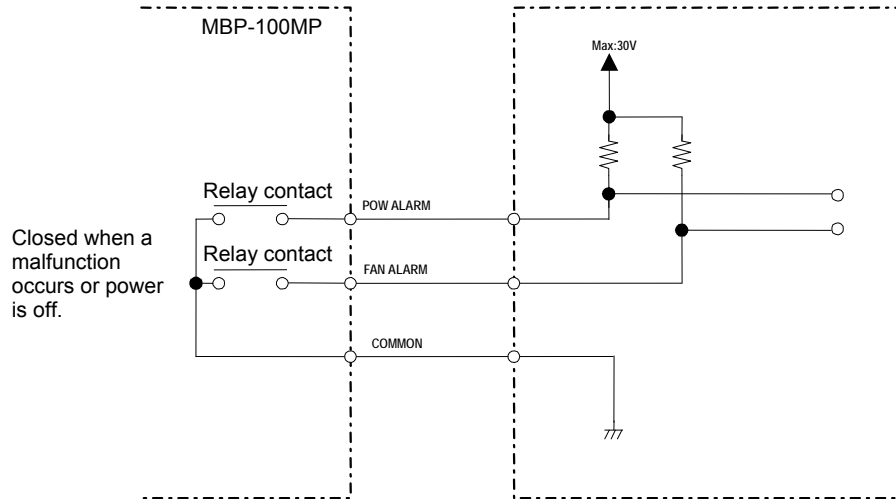
A normally open relay circuit that behaves as below.

Under normal operation:	An alarm pin and the common pin are open.
In a malfunction or power-off state:	An alarm pin and the common pin are closed.

Pin 9 is a common pin for both the power alarm and fan alarm.

The contact rating is 0.5 A @ 30 V DC.

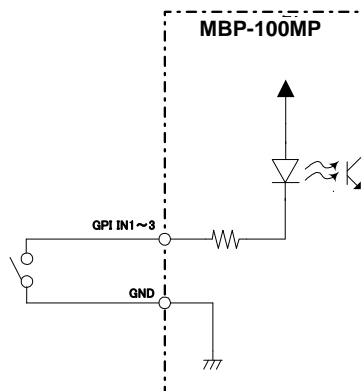
Alarm output



GPI IN Circuit

GPI input behaves as below.

The circuit between the GPI IN pin and Ground pin are closed:	The function is ON.
The circuit between the GPI IN pin and Ground pin are open:	The function is OFF.

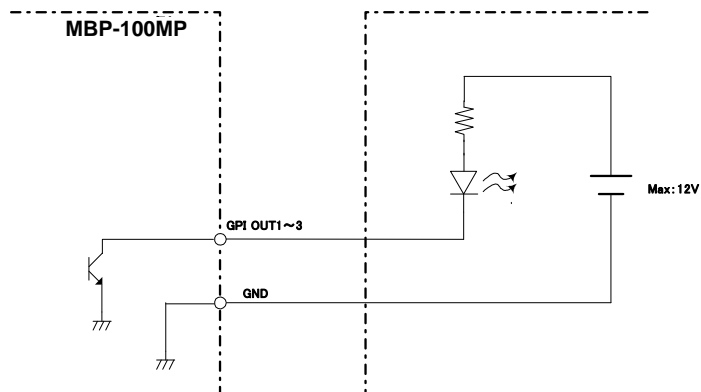


GPI OUT Circuit

Open collector output

When using an external power source, its voltage should be 12 V or less.

The output current of each GPI OUT pin should be less than 20 mA.



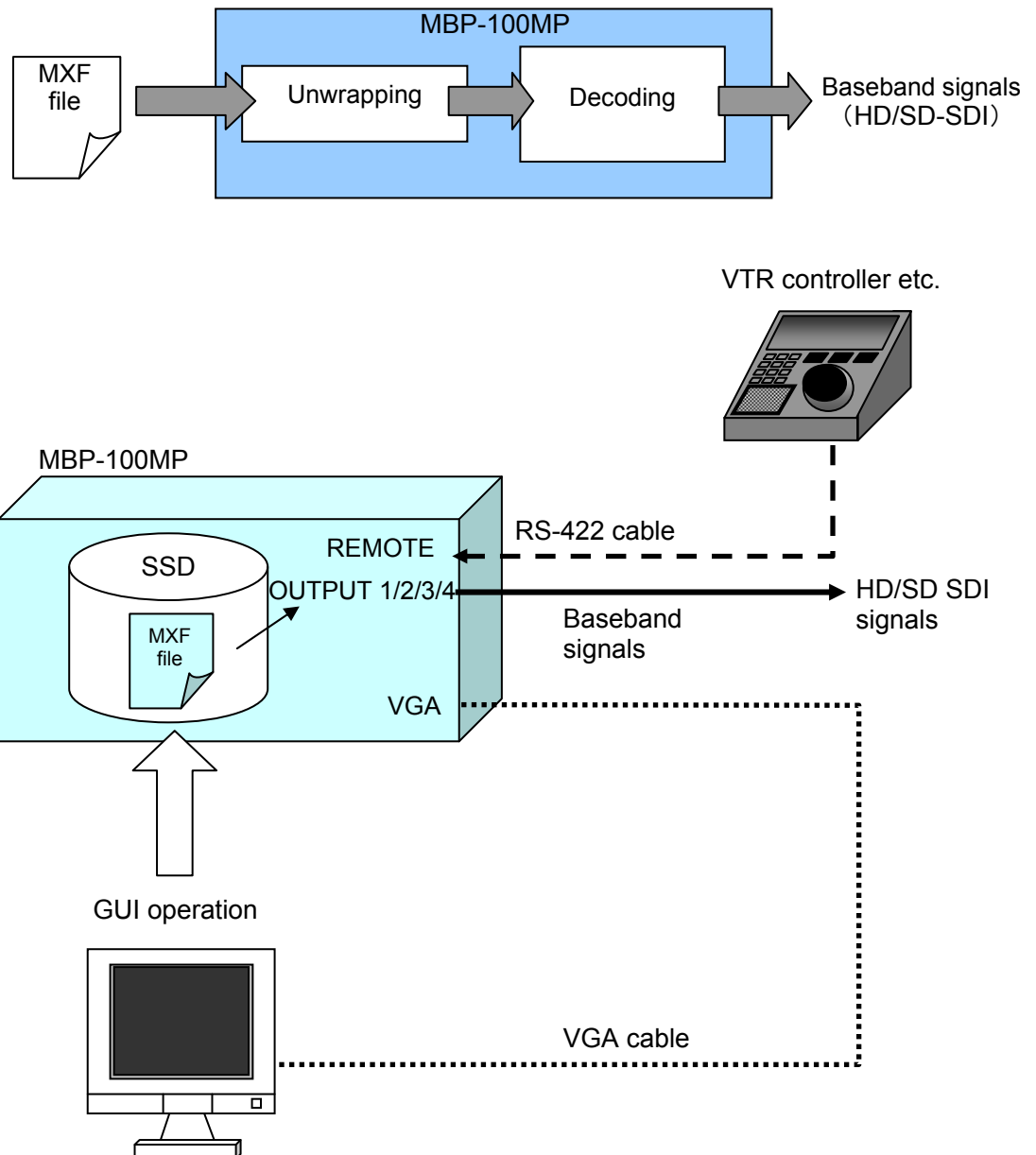
3. Connection

Connect peripheral devices as depicted as follows.

IMPORTANT

Serial control via REMOTE can only be used for one-way, VTR control or controlled.

MXF files stored on the built-in SSD are converted to HD/SD-SDI signals and output from the MBP-100MP. The MBP-100MP can also be controlled via VGA from a PC on which the control software is installed.



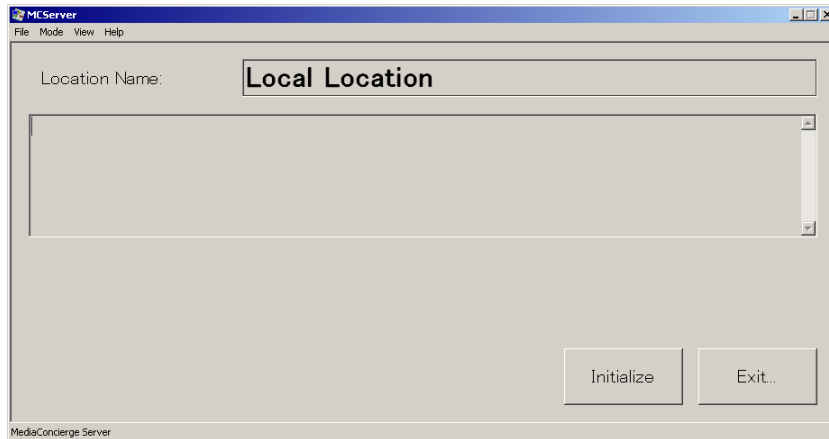
3-1. Genlock Settings

The vertical and horizontal system phases applied to the output video can be adjusted with the genlock signal on the **MC Server Tool**.

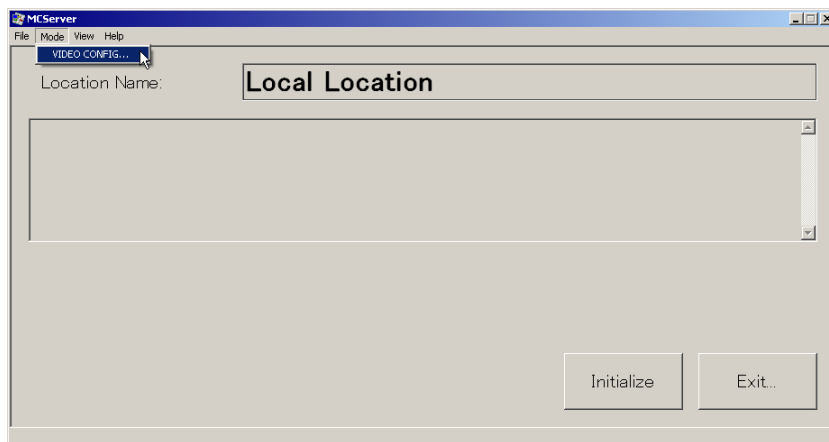
IMPORTANT

To use the MC Server Tool, connect a VGA monitor, a mouse and a keyboard. Note that all applications should be closed before starting the MC Server Tool.

1. Double-click the **MCServer** icon on the desk top to start the application.

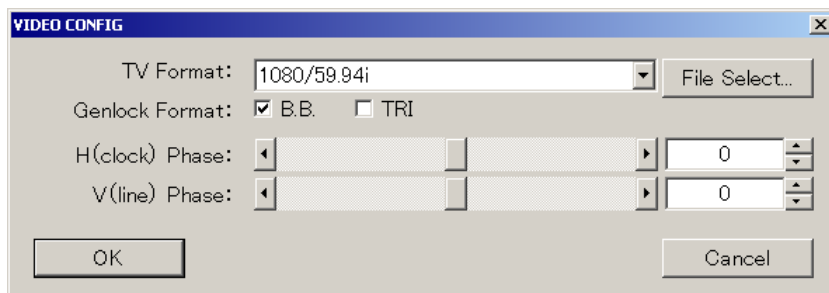


2. Select **VIDEO CONFIG...** from the **Mode** menu.



3. Select a suitable **TV Format** and **Genlock Format** for use.

TV Format	Select a suitable TV format.		
Genlock Format	Black Burst	>>	Select B.B.
	Tri-level Sync	>>	Select TRI.



4. Adjust genlock phase.
Adjust the genlock phases by using sliders or entering numeric values.

◆ **H Phase**

Adjust the horizontal phase by using the slider or entering the numeric value.

TV Format	Setting Range	Step value	Default
1080/59.94i	-1100 to +1099 (-14.83µs to +14.81µs)	1 (13.48ns)	0
1080/50i	-1320 to +1319 (-17.78µs to +17.77µs)	1 (13.47ns)	0
720/59.94p	-825 to +824 (-11.12µs to +11.11µs)	1 (13.48ns)	0
720/50p	-990 to +989 (-13.34µs to +13.32µs)	1 (13.47ns)	0
525/60	-858 to +857 (-31.78µs to +31.74µs)	1 (37.04ns)	0
625/50	-864 to +863 (-32.00µs to +31.97µs)	1 (37.04ns)	0

◆ **V Phase**

Adjust the vertical phase by using the slider or entering the numeric value.

TV Format	Setting Range	Step value	Default
1080/59.94i	-562 lines to +562 lines (-16.67 ms to +16.67ms)	1 line (29.66µs)	0
1080/50i	-562 lines to +562 lines (-20.00 ms to +20.00ms)	1 lines (35.56µs)	0
720/59.94p	-375 lines to +374 lines (-8.34 ms to +8.32ms)	1 lines (22.24µs)	0
720/50p	-375 lines to +374 lines (-10.00 ms to +9.97ms)	1 lines (26.67µs)	0
525/60	-262 lines to +262 lines (-16.65 ms to +16.65ms)	1 lines (63.56µs)	0
625/50	-312 lines to +312 lines (-20.00 ms to +20.00ms)	1 lines (64.00µs)	0

5. Click **OK** to apply the settings.

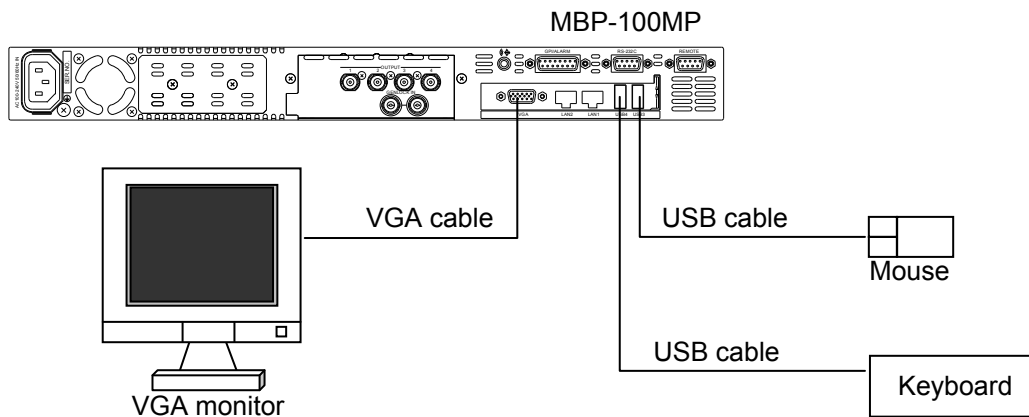
4. How to Change Network Settings

The Windows Operation System (Microsoft Windows XP Embedded) is installed in the MBP-100MP. There are a few cases in which users will need to change network settings in order to use the MBP-100MP over a network. This section describes how to change the computer name and IP address for such cases.

The C drive is write-protected to enable the MBP-100MP to be powered on or off without shutting down. The write protection on the C drive must be disabled to change the computer name or IP address.

4-1. Connecting Monitor, Keyboard, and Mouse

To change settings on the MBP-100MP, connect a VGA monitor, keyboard and mouse as shown below. (A VGA monitor, keyboard and mouse need to be purchased separately.)



4-2. Disabling Write-Protection

1. When you power on the MBP-100MP, Windows and the listed start-up programs automatically start. Close all programs.
2. Double-click the `ewf_disable.bat` in `D:\forawork` to execute the batch file.
3. **Command Prompt** opens and shows the following message. Press any key on the keyboard once.

```
*****  
The write-protection (EWF) for the boot drive(C:) is set to enable.  
The any driver cannot install when write-protection is enabled.  
*****  
Press any key to continue . . .
```


4. The following message appears. Check that **Boot Command** is set to **DISABLE**, and then press any key on the keyboard once. Windows automatically restarts.

```
** Enabling overlay

Protected Volume Configuration
Type                RAM
State               DISABLED
Boot Command        DISABLE
  Param1            0
  Param2            0
Persistent Data     ""
Volume ID           XX XX XX XX XX XX XX XX XX XX XX XX XX XX XX
Device Name         "\Device\HarddiskVolume1" [C: ]
Max Levels          1
Clump Size          512
Current Level       N/A

Memory used for data 0 bytes
Memory used for mapping 0 bytes

*****
The write-protection for the boot drive was set to disable.
It is reflected in the next boot. Please restart the Windows.
*****
Press any key to continue . . .
```

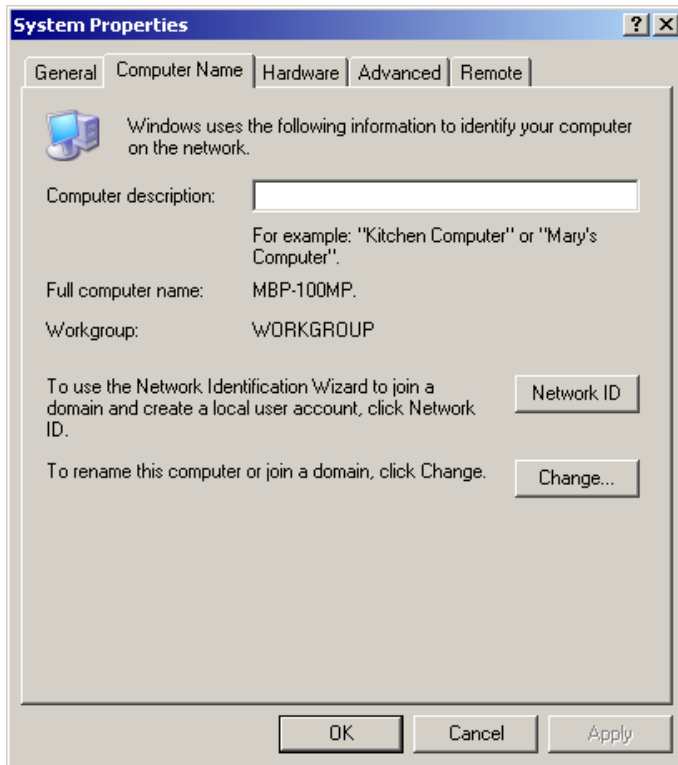
5. After restarting, the listed start-up programs start automatically. Close all programs.

The system is now ready to change settings or install new applications.

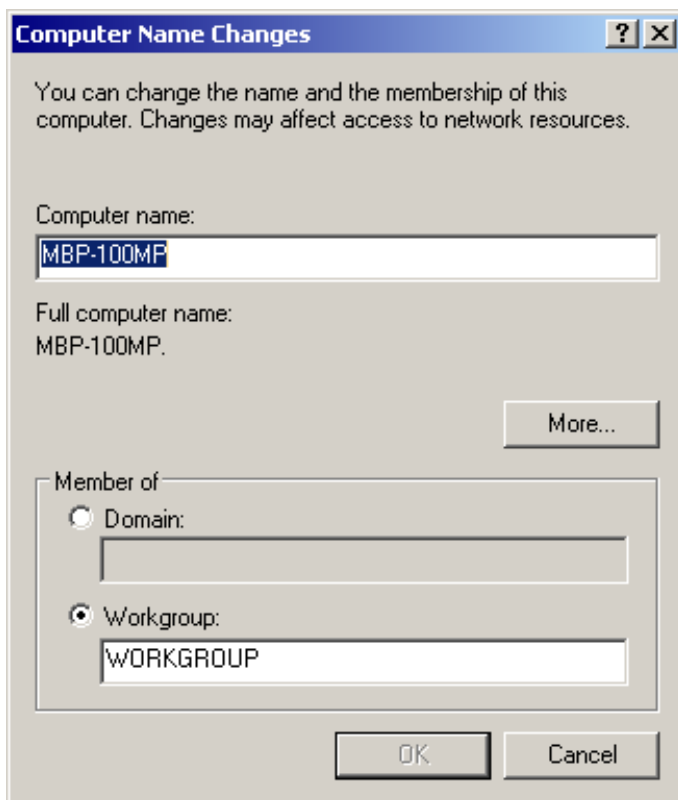
IMPORTANT
Be sure to shut down before powering off the MBP-100MP, if you have disabled write-protection. Powering off without shutdown may corrupt data.

4-3. Changing the Computer Name

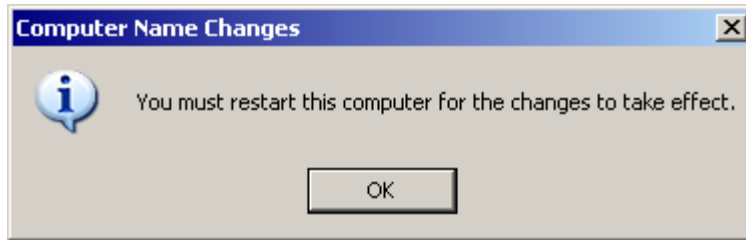
1. Right-click **My Computer**, and then click **Properties**.
2. A dialog box as shown below opens. Click **Change**.



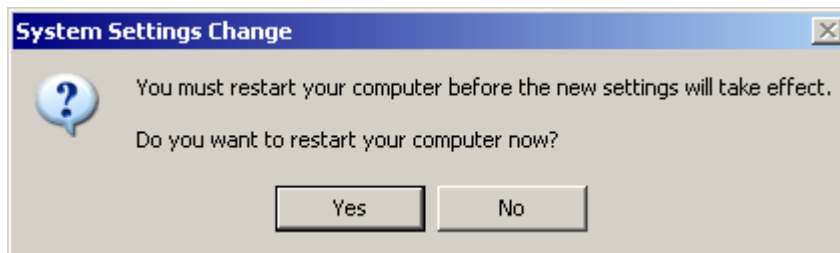
3. Type a new name for the computer in the **Computer name** box, and click **OK**.



4. The confirmation dialog box appears. Click **OK**.

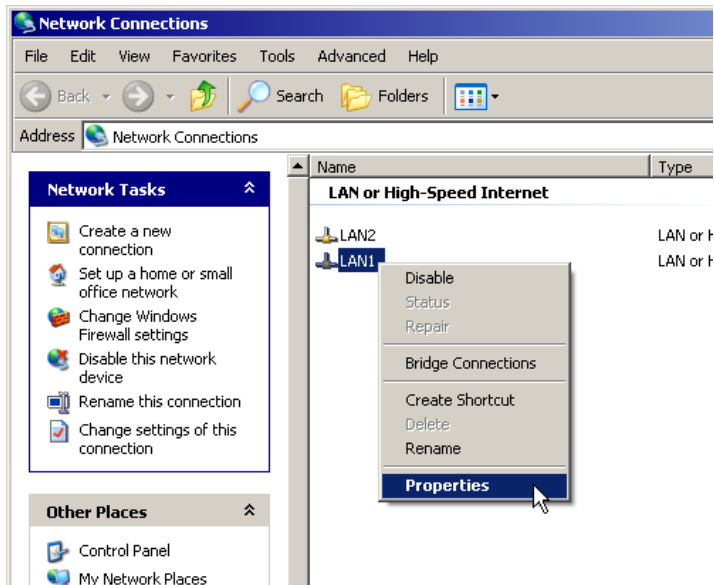


5. The screen returns to the dialog box that appeared in step 3. Click **OK**.
6. The dialog box as shown below appears. If you want to continue to change the settings, click **No**. If your changes are complete, click **Yes**. If you click **Yes**, the computer automatically restarts.

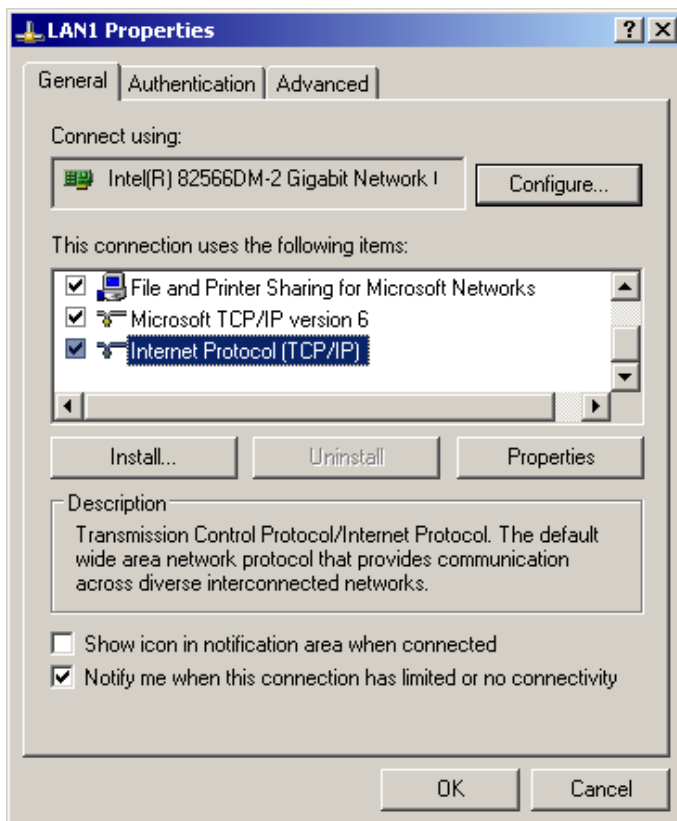


4-4. Changing the IP Address

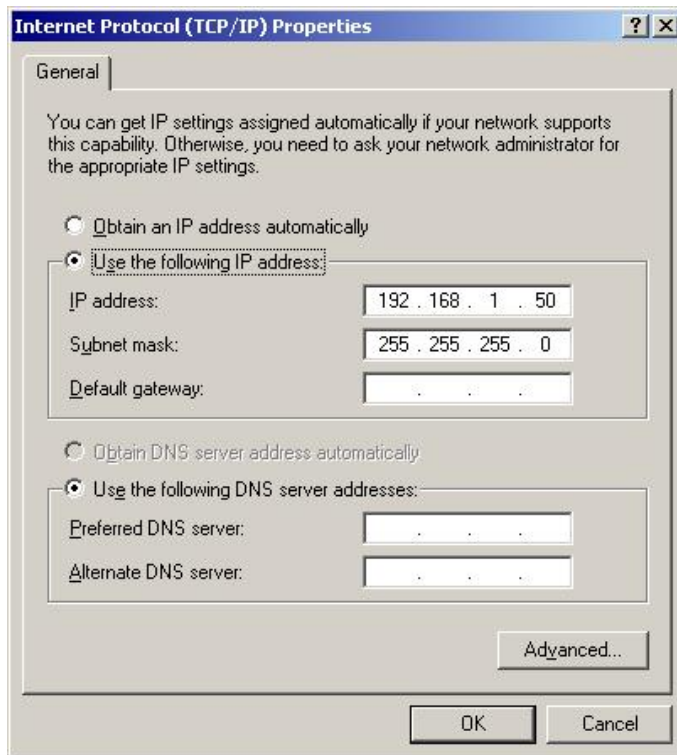
1. Right-click **My network places**, and then click **Properties**.
2. Right-click **LAN1**, and then click **Properties**.



3. A dialog box as shown below appears. Double-click **Internet Protocol(TCP/IP)**.



4. Enter a new **IP address**, **Subnet mask** and other necessary setting values that suit your network, and then click **OK**.



5. It returns to the dialog box that appeared in step 3. Click **OK**.

Other drivers can be installed in the same manner.

4-5. Enabling Write-Protection

Write-protection must be enabled after the setting or the installation is finished. The procedure is as follows.

1. Double-click **ewf_enable.bat** in **D:\forawork** to execute the batch file.
2. **Command Prompt** opens. Press any key on the keyboard.
3. Check that **Boot Command** is set to **Enable**, and then press any key on the keyboard once. Windows automatically restarts. (See section 4-2. "Disabling Write-Protection".)

After the restart the write-protection on the C drive is enabled.

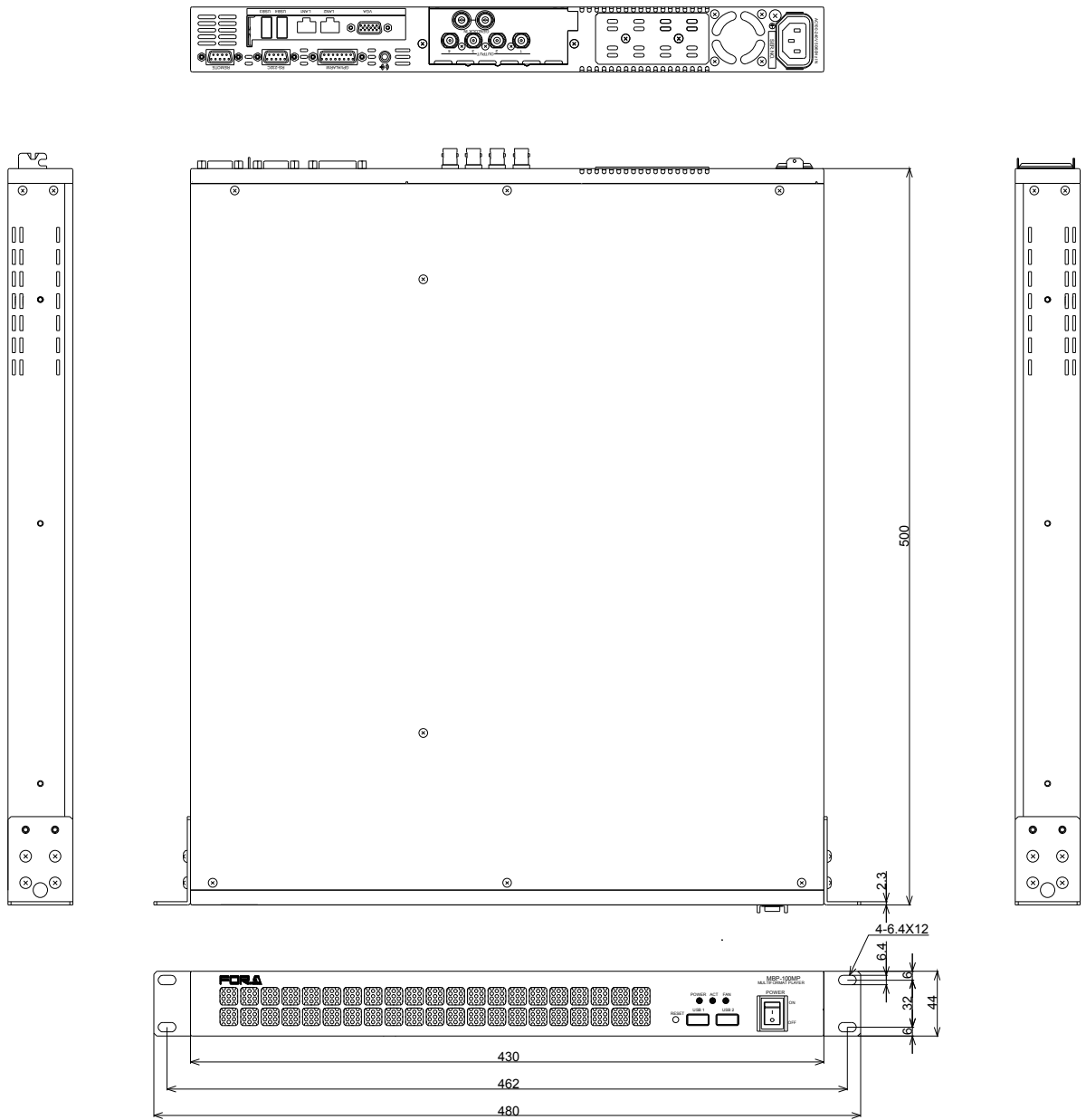
5. Specifications and Dimensions

5-1. Unit Specifications

Video Formats	HD-SDI 1080/59.94i, 1080/50i, 720/59.94p, 720/50p SD-SDI 525/60, 625/50
Video Outputs	HD: 1.485/1.001Gbps or SD: 270Mbps, 75Ω BNC x 4
Genlock Input	BB: 0.429Vp-p (NTSC)/0.45Vp-p (PAL) or Tri-level Sync: 0.6 Vp-p, 75Ω BNC x 1, loop-through (Terminate with 75Ω terminator, if unused.)
Audio	Embedded audio: Up to 8 ch (4 stereo pairs) (group 1 and 2) 16/20/24-bit 48 kHz
Audio Gain Setting	±20.0 dB
Time Code	Embedded: ANC timecode
Process Control	Video level: 0.0% to 200.0% Chroma level: 0.0% to 200.0% Black level: -20.0% to 100.0% Chroma phase: -179.8° to 180.0°
Storage Capacity (SSD)	MBP-100MP64G Actual storage capacity: 64 GB MBP-100MP128G Actual storage capacity: 128 GB
Interfaces	
VGA	15-pin mini D-sub (female) x 1
USB	USB 2.0 Series-A type connector x 4 (2 ports on front panel, 2 ports on rear panel)
LAN1/2	100BASE-TX/1000BASE-T compatible (1000BASE-T recommended), RJ-45 x 2
REMOTE	9-pin D-sub (female) x 1
RS232C	9-pin D-sub (male) x 1
GPI/ALARM	15-pin D-sub (female) x 1 ALARM: power and fan alarm (contact output) GPI: 3-input/3-output (contact input, open collector output)
Audio out	3.5 mm stereo mini jack x 1
Temperature	0°C to 40°C
Humidity	20% to 80% (no condensation)
Power	100 V AC to 240 V AC ±10%, 50/60 Hz
Power Consumption	140 VA (140 W) at 100 V AC to 120 V AC 154 VA (135 W) at 220 V AC to 240 V AC
Dimensions	430 (W) x 44 (H) x 500 (D) mm EIA 1RU
Weight	9 kg
Consumables (if used 24 hours a day at room temperature)	
	Cooling fans: Replace every 3 years
	Power unit: Replace every 5 years
	Battery: Replace every 5 years

5-2. External Dimensions

(All dimensions in mm.)

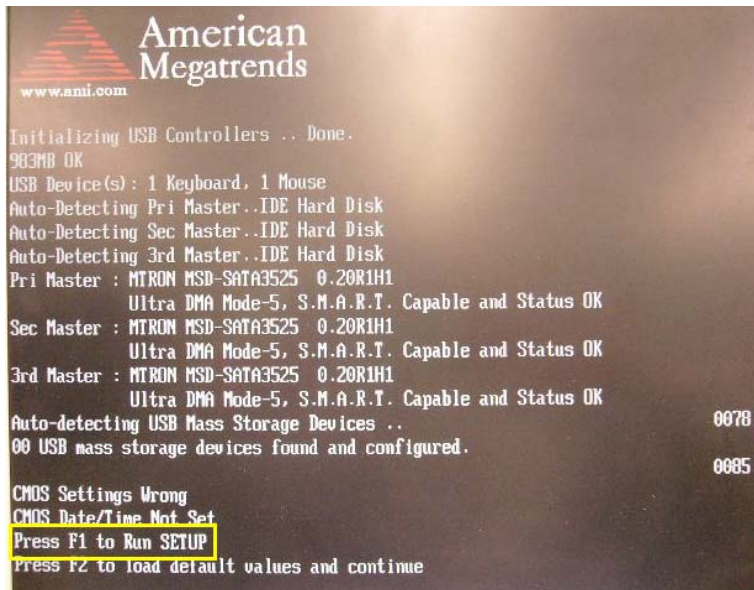


Appendix. How to Reset BIOS

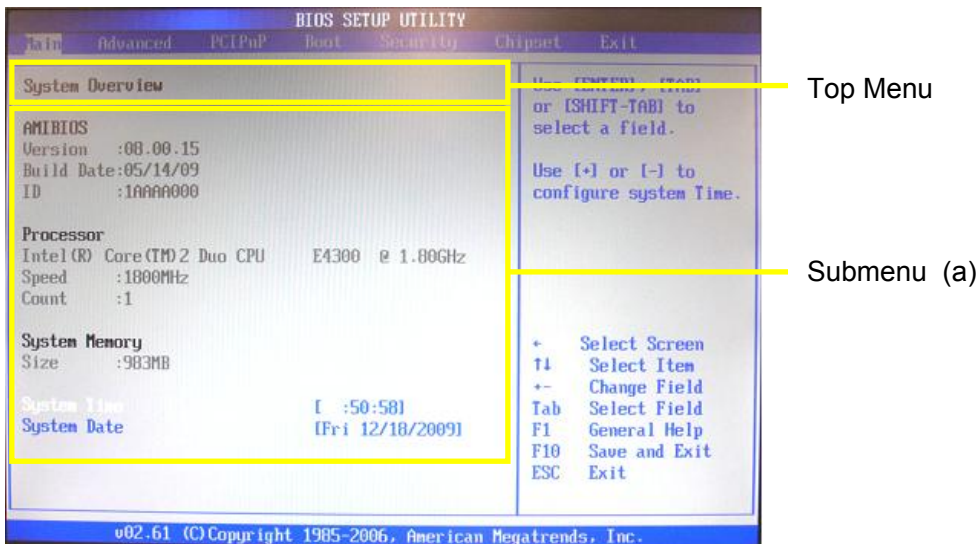
This appendix explains how to reset the BIOS. Please follow the procedure below in case you need to reset the BIOS due to the battery failure or such reason.

1. Opening the BIOS Setup Menu

1. Connect a PC monitor, keyboard, and mouse to the MBP-100MP and turn on the unit.
2. The screen appears as shown below. Press the **F1** key.



3. The BIOS SETUP UTILITY is opened.



On the BIOS SETUP UTILITY screen, set the values for the menus as shown below. The detailed procedure is given in the following section.

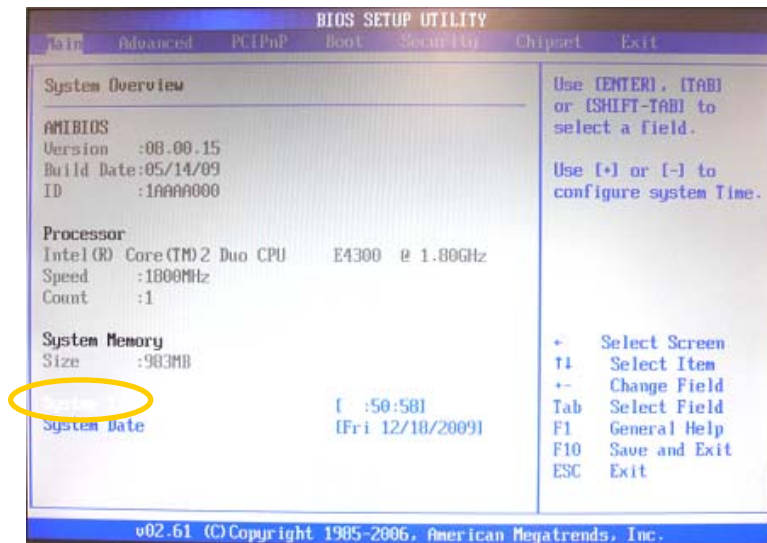
Item	Top Menu	Top Menu (a)	Submenu (b)	Value
(1)	Main	System Time	-	Current time
		System Date	-	Current date
(2)	Advanced	Floppy Configuration	Floppy A	Disabled
			Floppy B	Disabled
(3)	Boot	Boot Settings Configuration	Wait For 'F1' If Error	Disabled
		Boot Device Priority	1 st Boot Device	Hard Disk
(4)	Chipset	South Bridge Chipset Configuration	Restore on AC Power Loss	Power On

2. Setting Procedure

- (1) Set the current date and time in the Main menu provided on the menu bar.
 (a) On the menu bar, select **Main** using the right and left arrow keys.

◆ Main menu screen

- (b) Set the system time.
 Select **System Time** using the right and left arrow keys.



```
System Time      [ :49:33]
System Date      [Fri 12/18/2009]
```

Enter the current time using the numeric keys. Press **Enter** to confirm the change and move the cursor to the next item on the hour, minute, and second.

- (c) Set the current date.
 Select **System Date** using the right and left arrow keys.

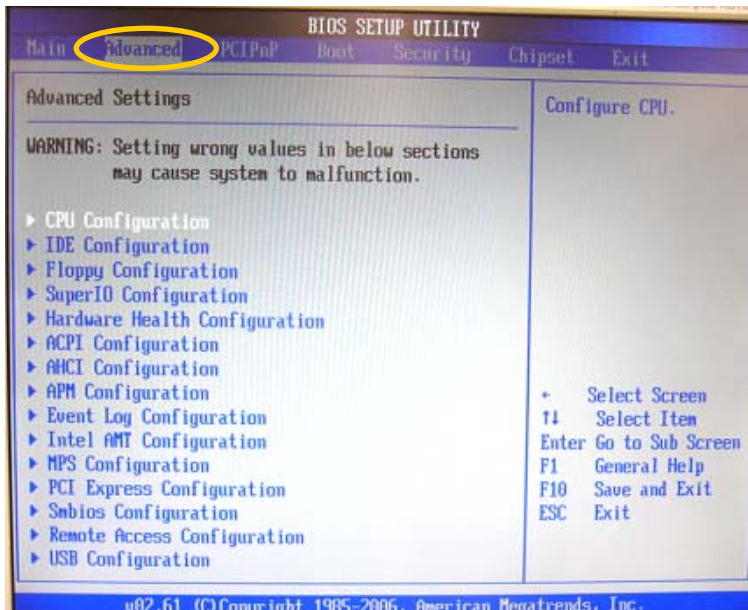
```
System Time      [11:50:18]
System Date      [Fri 12/18/2009]
```

Enter the current time using the numeric keys. Press **Enter** to confirm the change and move the cursor to the next item on the month, day, and year.

(2) Set the Floppy Configuration parameters in the **Advanced** menu on the menu bar.

◆ **Advanced menu screen**

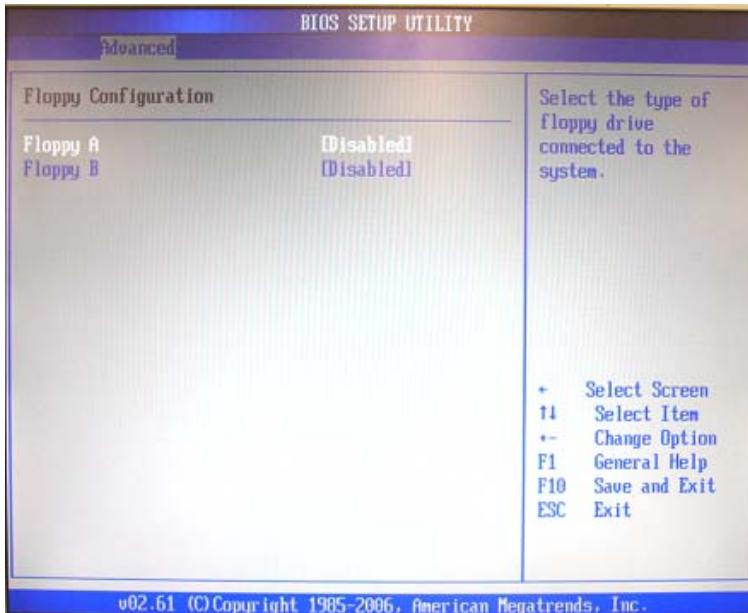
(a) On the menu bar, select **Advanced** using the right and left arrow keys.



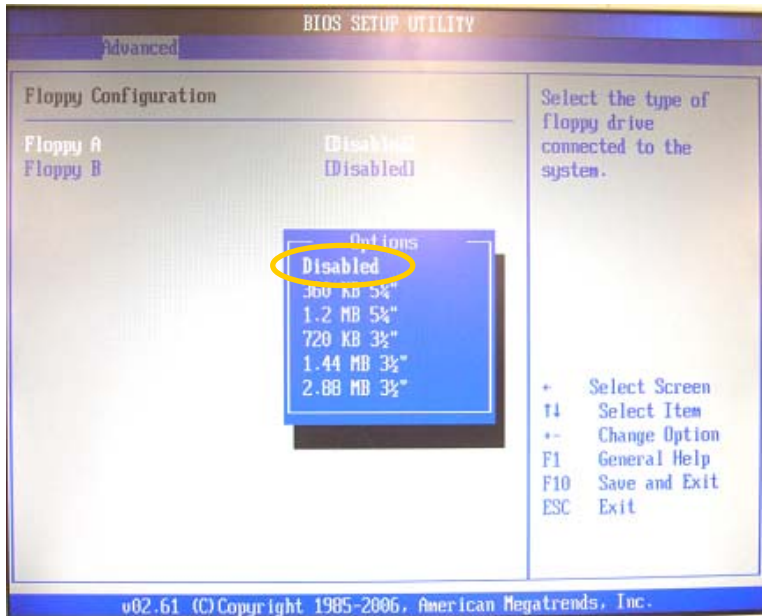
(b) Select **Floppy Configuration** using the up and down arrow keys, and press **Enter**. The **Floppy Configuration** menu will be displayed.



Floppy Configuration menu



(c) Disable **Floppy A** and **Floppy B**.
Select **Floppy A** or **Floppy B** using the up and down arrow keys, and press **Enter**. The **Options** window as shown below appears. Select **Disabled** and press **Enter**.

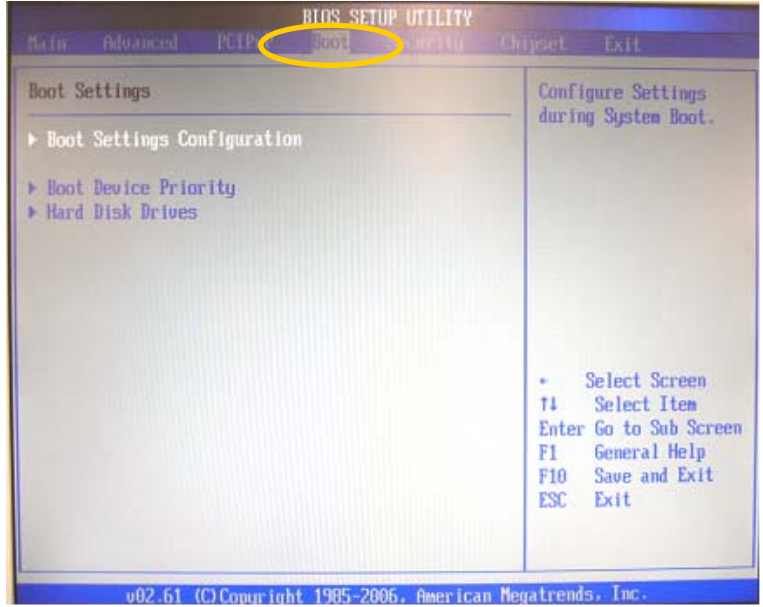


* After you finish the setting, verify that the value in the square brackets opposite the item is set to **Disabled**. The **Esc** key on the keyboard allows you to return to the previous screen.

(3) Set the **Boot Settings Configuration** parameters and **Boot Device Priority** in the **Boot** menu on the menu bar.

◆ **Boot Menu Screen**

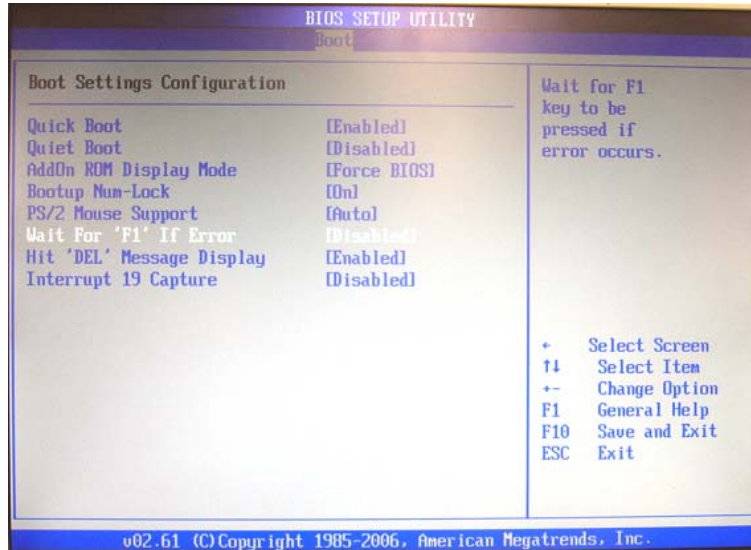
(a) Select **Boot** on the menu bar using the right and left arrow keys.



(b) Set the **Boot Settings Configuration** parameters. Select **Boot Settings Configuration** using the up and down arrow keys, and press **Enter**. The **Boot Settings Configuration** menu will be displayed.



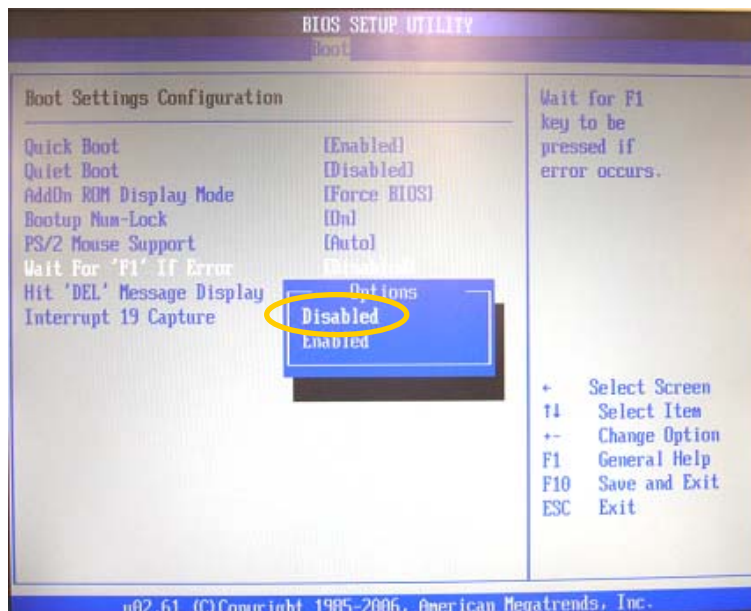
Boot Settings Configuration menu



- (c) Set **Wait For 'F1' If Error** to **Disabled**.
Select **Wait For 'F1' If Error** using the up and down arrow keys.



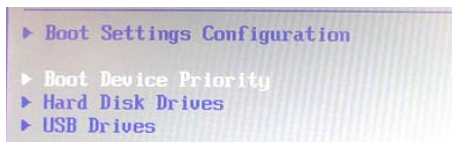
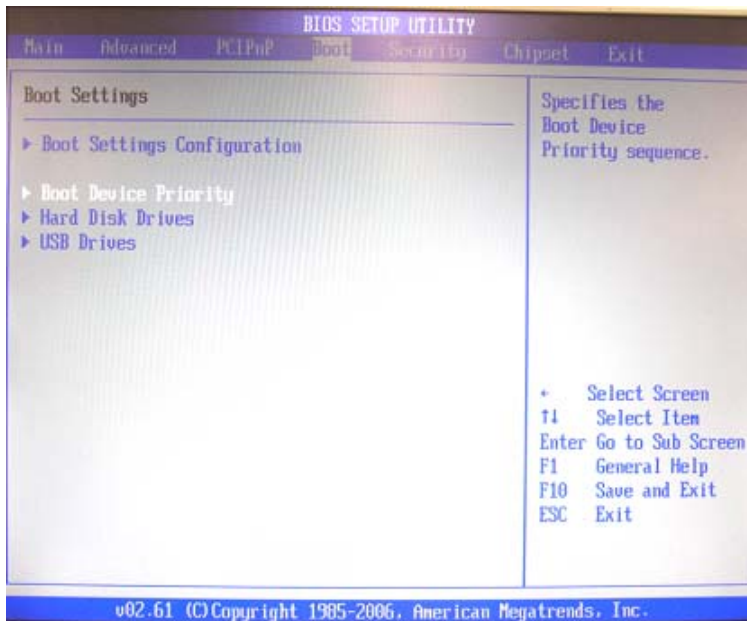
Press **Enter**. The **Options** window as shown below appears. Select **Disabled**, and press **Enter**.



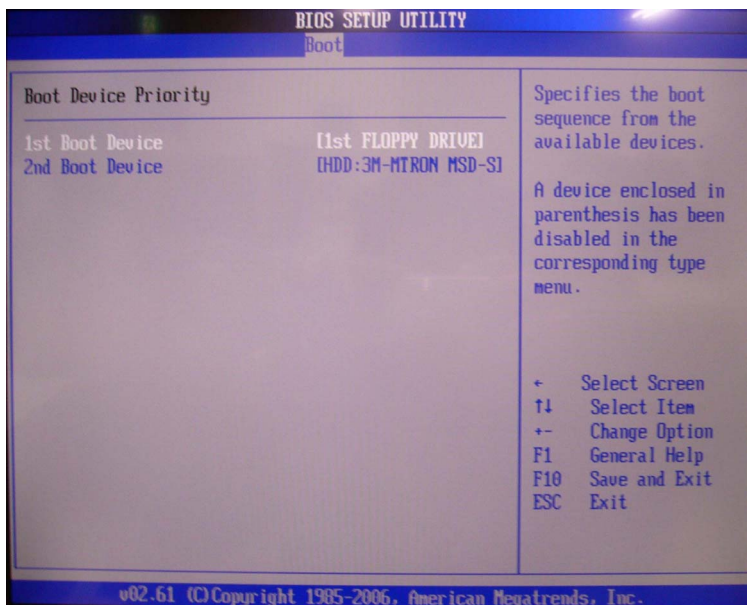
- * After you finish the setting, verify that the value in the square brackets opposite the item is set to **Disabled**. The **Esc** key on the keyboard allows you to return to the previous screen.

(d) Set the **Boot Device Priority**.

Select **Boot Device Priority** using the up and down arrow keys, and press **Enter**. The **Boot Device Priority** menu will be displayed.

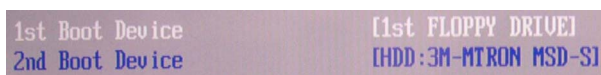


Boot Device Priority menu

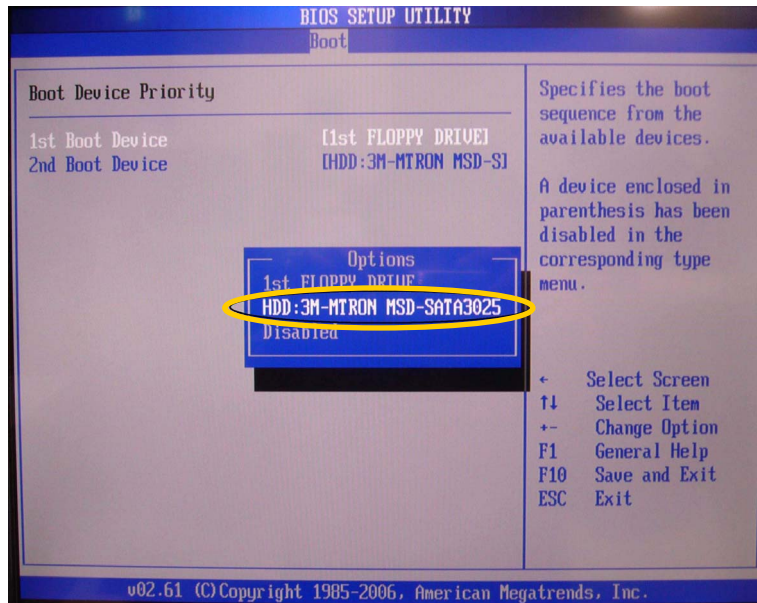


(e) Set **1st Boot Device** to **HDD: xxxxxxxx**.

Select **1st Boot Device** using the up and down arrow keys.



Press **Enter**. The **Options** window as shown below appears. Select **HDD: xxxxxxxx**, and press **Enter**.

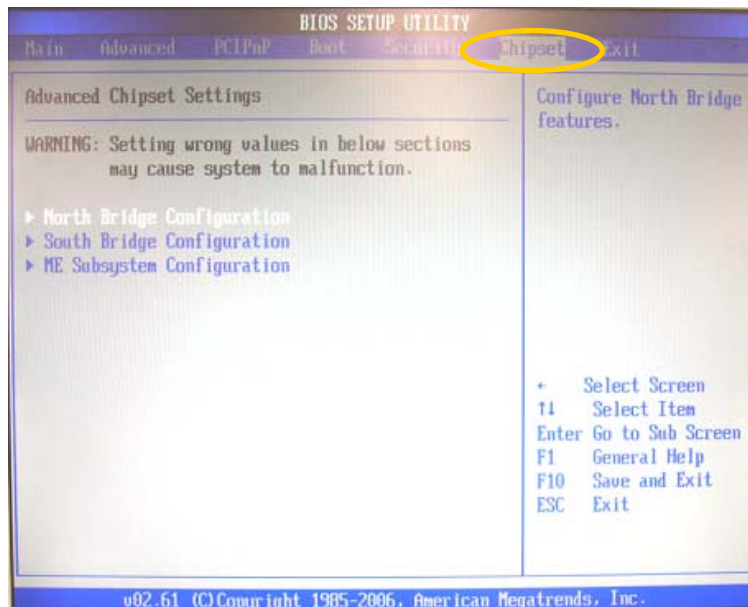


* After you finish the setting, verify that the value in the square brackets opposite the item is set to **HDD: xxxxxx**. The **Esc** key on the keyboard allows you to return to the previous screen.

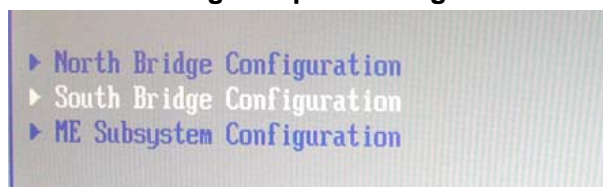
(4) Set the **South Bridge Chipset Configuration** parameters in the **Chipset** menu on the menu bar.

◆ **Chipset menu screen**

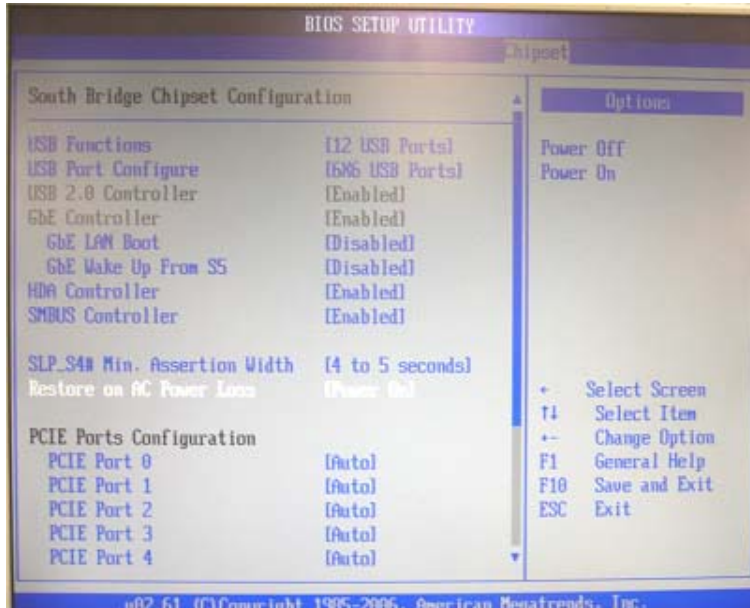
(a) Select **Chipset** menu on the menu bar using the right and left arrow keys.



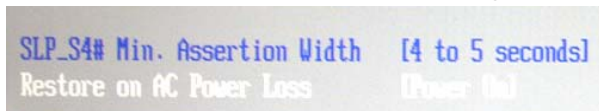
(b) Select **South Bridge Configuration** using the up and down arrow keys, and press **Enter**. The **South Bridge Chipset Configuration** menu will be displayed.



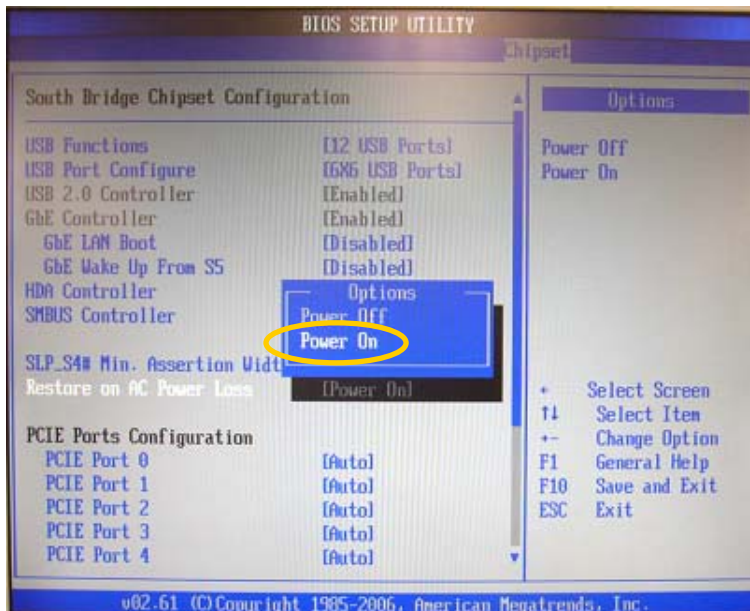
South Bridge Chipset Configuration menu



- (c) Set **Restore on AC Power Loss** to **Power On**.
Select Restore on AC Power Loss using the up and down arrow keys.



Press **Enter**. The **Options** window as shown below appears. Select **Power On**, and press **Enter**.



- * After you finish the setting, verify that the value in the square brackets opposite the item is set to **Power On**. The **Esc** key on the keyboard allows you to return to the previous screen.

- (d) Once you have completed the settings, press the **F10** key. A confirmation message appears asking if you want to save the settings and exit the BIOS setup menus. Click **Yes**. The **BIOS SETUP UTILITY** will close and the system restarts from the BIOS boot screen.

The procedure is complete.

Warning

This equipment has been tested and found to comply with the limits for a Class A digital device, pursuant to Part 15 of FCC Rules. These limits are designed to provide reasonable protection against harmful interference when the equipment is operated in a commercial environment. This equipment generates, uses, and can radiate radio frequency energy and, if not installed and used in accordance with the instruction manual, may cause harmful interference to radio communications. Operation of this equipment in a residential area is likely to cause harmful interference, in which case the user will be required to correct the interference at his own expense.



FOR-A COMPANY LIMITED

Head Office 3-8-1 Ebisu, Shibuya-ku, Tokyo 150-0013, Japan
Overseas Division Phone: +81(0)3-3446-3936, Fax: +81(0)3-3446-1470
Japan Branch Offices Osaka/Okinawa/Fukuoka/Hiroshima/Nagoya/Sendai/Sapporo
R&D/Production Sakura Center/Sapporo Center

FOR-A America Corporate Office

11155 Knott Ave., Suite G&H, Cypress, CA 90630, USA
Phone: +1-714-894-3311 Fax: +1-714-894-5399

FOR-A America East Coast Office

2 Executive Drive, Suite 670, Fort Lee Executive Park, Fort Lee, NJ 07024, USA
Phone: +1-201-944-1120 Fax : +1-201-944-1132

FOR-A America Distribution & Service Center

2400 N.E. Waldo Road, Gainesville, FL 32609, USA
Phone: +1-352-371-1505 Fax: +1-352-378-5320

FOR-A Corporation of Canada

346A Queen Street West, Toronto, Ontario M5V 2A2, Canada
Phone: +1-416-977-0343 Fax: +1-416-977-0657

FOR-A Latin America & the Caribbean

5200 Blue Lagoon Drive, Suite 760, Miami, FL 33126, USA
Phone: +1-305-931-1700 Fax: +1-305-264-7890

FOR-A UK Limited

UNIT C71, Barwell Business Park, Leatherhead Road, Chessington Surrey, KT9 2NY, UK
Phone: +44(0)20-8391-7979 Fax: +44(0)20-8391-7978

FOR-A Italia S.r.l.

Via Volturmo 37, 20047 Brugherio MB, Italy
Phone: +39-039-881-086/103 Fax: +39-039-878-140

FOR-A Corporation of Korea

1007, 57-5, Yangsan-ro, Yeongdeungpo-gu, Seoul 150-103, Korea
Phone: +82(0)2-2637-0761 Fax: +82(0)2-2637-0760

FOR-A China Limited

708B Huateng Bldg., No. 302, 3 District, Jinsong, Chaoyang, Beijing 100021, China
Phone: +86(0)10-8721-6023 Fax: +86(0)10-8721-6033

FOR-A Middle East-Africa Office

Jebel Ali Free Zone, LOB-16, Office 619, P. O. Box: 261914 Dubai, UAE
Phone: +971 4 887 6712 Fax: +971 4 887 6713

*The contents of this manual are subject to change without notice.