

INSTALLATION GUIDE

HVS-2000GUI

Graphical User Interface Software

Version 1.00.0-01-37 (- Higher) – Rev. 1

Version Revision History

Ver.	Rev.	Date	Description	Section/Page
1.00	-	2015/07/15		
1.00.0-00-88	-	2016/09/26	Changed chapter structure.	
1.00.0-01-09	-	2017/02/20	Supported Windows 10. Changed MU IP address settings.	1-3 4-1-2
1.00.0-01-29	-	2017/07/24	Added control panel link. Added saving/loading data.	4-2 4-3, 4-4
1.00.0-01-37	-	2017/09/07	Removed TCP PORT setting.	3-4-2

Software License Agreement

This Software License Agreement is a legally binding agreement between you ("User") and FOR-A Company Limited ("Company"). The software, user manual and all other associated documentation (collectively, "Product") are licensed, not sold, to the User. By installing and using the software, or by using a product of the Company in which the software is installed, User agrees to be bound by all terms and conditions of this agreement, as set forth below.

1. Grant of License

- a. The Company grants User a license to operate the Product in the manner specified in the user manual and other associated documentation. User may not use the Product in any manner other than that specified.
- b. The Company only grants User a license to personally use the Product, and does not allow User to transfer the license to a third person or to enable a third person to use the Product by any other method.
- c. In principle, the software may only be used on a single computer or device.
- d. While the software may include various programs, they may not be unbundled and used as standalone programs.

2. Restrictions on Distribution, Duplication, Leasing and/or Transfer of Product

User may not, without the Company's prior permission, distribute via communication lines, or lease or transfer electronic copies of the Product to another party, in whole or in part, nor attempt to do so.

3. Limitations of Guarantee

The Company and its program licensors disclaim all legal warranties, express or implied, with respect to the Product. User must use the Product at his or her own risk. In no event shall the Company and its program licensors be liable for any damages or loss of data or contents resulting from User's use of or inability to use the Product.

4. Provision of Upgrades and Updates

Whenever a software version is upgraded or updated, User may use the new version of the software by paying the amount separately specified by the Company. After upgrading software, User may not use an earlier version without the Company's prior permission.

5. Term of Validity of Agreement

This agreement shall be effective for a period of one year from the day User begins using the software. The same conditions of the agreement shall be extended for further one-year terms unless User or the Company expresses, at least one month prior to expiration of the agreement, the intent not to renew the agreement.

6. Termination of Agreement

- a. The Company reserves the right to immediately terminate this agreement if User corresponds to any of the following circumstances.
 - (1) User violates any terms of this agreement
 - (2) User is unable or refuses to make any required payment.
- b. User may terminate this agreement by written notice to the Company under the following circumstances, but may not seek a refund of the amount that User has already paid to the Company.
 - (1) User waives the license.
 - (2) User destroys or loses the software package and prevents the Company from being able to confirm its existence.
- c. After termination of this agreement, User may not use the Product in any way, shape or form.

7. Ownership

The Company and its program licensors retain all rights, including copyright and intellectual property rights, to the Product. User may not modify any program included in this software, nor disassemble, decompile, or reverse-engineer a program to analyze its source code.

8. Others

This agreement will be governed by and construed in accordance with copyright laws and treaties in Japan and by laws and international treaties relating to intangible property rights. User must comply with all copyright laws as well as applicable laws and regulations when using the Product.

9. Jurisdiction

Any dispute relating to the Agreement shall be subject to the exclusive jurisdiction of the Tokyo District Court of Japan.

10. Support

If the Company discovers a flaw in the software or revises a program within one year after User receives the software, the Company will provide information regarding the flaw or revision or a revised program to User, free of cost.

Table of Contents

1. Prior to Starting.....	5
1-1. Unpacking	5
1-2. Setup Procedure	5
1-3. PC System Environment.....	5
2. HVS-2000GUI Installation	6
2-1. Installing HVS-2000GUI	6
2-2. Starting / Closing the HVS-2000GUI.....	6
2-3. Removing the HVS-2000GUI	6
3. Connection	7
3-1. HVS-2000 System and PC Network Configuration.....	7
3-2. PC Network Settings	7
3-3. PC Network Device Settings	8
3-4. If the MU (HVS-2000) Connection is Unsuccessful	9
3-4-1. Adding the GUI to Windows Firewall as Allowed Program.....	9
3-4-2. Manually Selecting an MU	9
3-4-3. Changing the Connected MU IP Address.....	10
4. HVS-2000GUI Operation.....	11
4-1. Verifying Current Status	11
4-2. Linking with Control Panel.....	13
4-3. Saving Data (from Switcher to USB Drive)	15
4-4. Loading Data (from USB Drive to Switcher)	15

1. Prior to Starting

HVS-2000GUI is a software application, can be installed on a computer to remotely control HVS-2000 units from the computer,

1-1. Unpacking

Check your received items against the packing lists below. Check to ensure no damage has occurred during shipment. If damage has occurred, or items are missing, inform your supplier immediately.

ITEM	QTY	REMARKS
USB flash drive	1	Installation file User manual (PDF) included
Installation Guide	1	(This guide)

1-2. Setup Procedure

Installing the HVS-2000GUI (See Sec. 2.)
↓
PC Network Settings (See Secs. 3-2 and 3-3.)
↓
Connecting the PC to HVS-2000 system (See Sec. 3-1.)
↓
Starting HVS-2000GUI (See Sec. 3-2.)
↓
HVS-2000 switcher operation

1-3. PC System Environment

To install the HVS-2000GUI on a PC, the following system environment is required.

OS	Windows 7(Home Premium Edition or later) Windows 10 (Pro or later)
CPU	Intel(R) Atom(TM) CPU N450 @ 1.66GHz or faster
Memory	1GB or more
Hard Disk Space	32GB or more
Display	Resolution of WXGA (1280 x 768 pixels) or better Must be capable of full color(24-bit) display
Graphic Card	256.0MB or more video memory
Network Port	1 port, 1000BASE-T (USB-LAN adapter can also be used.*1)
USB Port	1 port for transferring files To use an HVS-2000TPU , 2 more ports (4 if possible) are required. *2
HDMI port	1 port (if using an HVS-2000TPU.) *2

*1 When using USB-LAN converters, disable the sleep and standby modes on your computer.

*2 Refer to "HVS-2000TPUS/TPU Installation Guide" for more details on HVS-2000TPU monitors.

2. HVS-2000GUI Installation

2-1. Installing HVS-2000GUI

Before installing HVS-2000GUI, set the text size in Windows to **Smaller – 100%** using the following procedure.

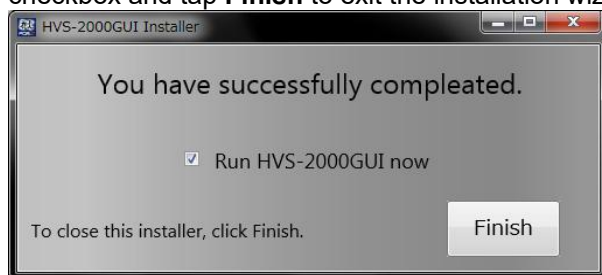
- Go to **Control Panel > Appearance and Personalization > Display**. Select **Smaller – 100%** and tap **Apply**.

◆ Installation

- (1) Load the supplied USB flash drive into the PC.
Double-tap “**HVS-2000GUI_vXXXX_XXXX_XXXX.exe**” in the folder to start the installation wizard.

If you are copying contents from the USB flash drive to a folder on the PC for installation, only one-byte alphanumeric characters can be used for the folder name. Otherwise, installation may not be completed properly.

- (2) The HVS-2000GUI installation will automatically start.
- (3) Once the installation is completed properly, the screen as below will appear. Check the checkbox and tap **Finish** to exit the installation wizard and start HVS-2000GUI.(2)



2-2. Starting / Closing the HVS-2000GUI

◆ Starting the HVS-2000GUI

- (1) Go to **Start > All Programs > FOR-A > HANABI > HVS-2000GUI** to start **HVS-2000GUI**.
- (2) The HOME screen will be displayed. Make sure that the status indicator (upper right) turns green.
Once the HVS-2000GUI has launched after the network connection (see Sec. 3 “Connection”), the MU connection will be established automatically (The “**LINK**” indication in the bottom right of the HVS-2000GUI window changes to “**CONNECTION**”.)

◆ Closing the HVS-2000GUI

Tap the close button [X] at the upper-right corner of the window, then tap **YES** to exit the HVS-2000GUI.

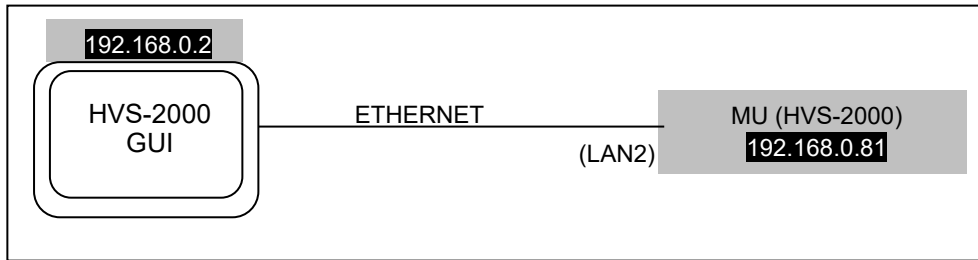
2-3. Removing the HVS-2000GUI

- (1) Go to **Control Panel**. Tap **Uninstall a program beneath Programs**. Select **HVS-2000GUI** and tap **Uninstall**.
- (2) Select **Remove** and tap **Next**.
- (3) Tap **Finish**.

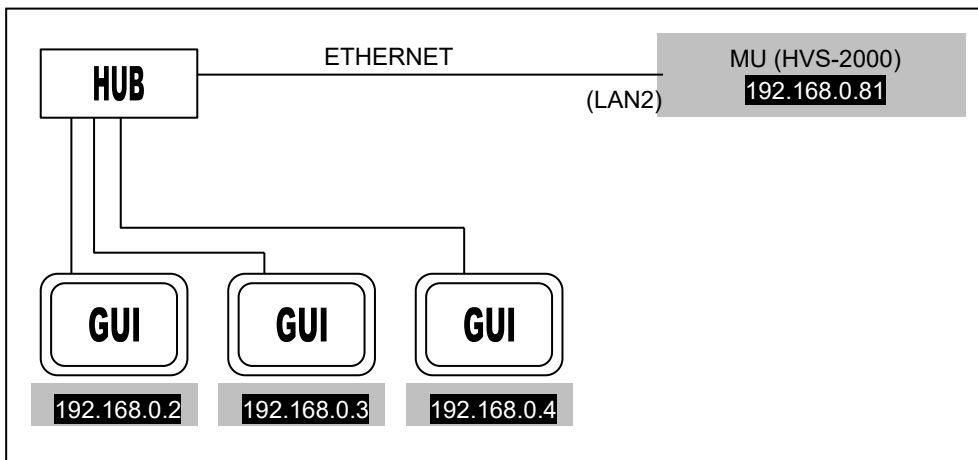
3. Connection

3-1. HVS-2000 System and PC Network Configuration

Configure your devices as shown below.



Up to three GUI (including a control panel Midas Touch and HVS-2000TPUS) can control a single MU (HVS-2000) via an Ethernet hub.



3-2. PC Network Settings

HVS-2000 units and GUI are connected via Ethernet. The Ethernet port on the HVS-2000 supports 10/100/1000BASE-T. Use the supplied or prepared LAN cable to connect to the HVS-2000. Use Category 5e or 6 cables. Use a cross-over cable for directly connection and straight-through cables for connection via a network hub.

◆ **MU (HVS-2000) LAN1 Default Settings**

IP address	192.168.0.80
Subnet mask	255.255.255.0
Gateway	192.168.0.1

◆ **MU (HVS-2000) LAN2 Default Settings**

IP address	192.168.0.81
Subnet mask	255.255.255.0
Gateway	192.168.0.1

◆ **PC Network Settings (if MU LAN ports settings are factory default)**

Available IP address range	192.168.0.2 to 254 (Do NOT use an IP address already being used by device on the same network.)
Subnet mask	255.255.255.0
Gateway	192.168.0.1

- (1) Go to **Start > Control Panel > Network and Internet > Network and Sharing Center**.
- (2) Tap the **Local Area Connection** icon and choose **Properties**. If the administrator password or confirmation is requested, enter the password or enter the confirmation information.
- (3) Tap the **Network** tab. Tap **Internet Protocol Version 4 (TCP/IPv4)** under “**This connection uses the following items:**” and tap **Properties**.
- (4) Select the **Use the following IP address:** radio button and set the **IP address** and **Subnet mask** settings.

After completing all settings, tap **OK** and close all windows.

NOTE

The procedure for setting network settings on the PC varies depending on the PC, so refer to your computer's USER Manual for details.

Make a note of the network settings before changing them in case you need to return the settings to their original settings later.

When running HVS-2000GUI within a company LAN, consult your network administrator.

3-3. PC Network Device Settings

Before using your HVS-2000GUI, verify that the network device on the computer is set as shown below.

- (1) Tap on the **Start** button and then select **Control Panel**.
- (2) Change **Viewed by:** to **Large Icons** found in the drop down in the upper left of the screen.
- (3) Tap on **Device Manager**.
- (4) Double tap on the Ethernet adapter device listed under **Network Adapters**.
(Choose an appropriate device, because an Ethernet device may vary depending on computers.)
- (5) Tap on the **Advanced** tab.
- (6) Select **Large Send Offload v2(IPV4)** in the **Property** box, then set **Disable** in the **Value** box.
- (7) Tap OK.

Note that depending on the Ethernet device, **Large Send Offload v2(IPV4)** may not listed or appear under a different name in the **Property** box.

3-4. If the MU (HVS-2000) Connection is Unsuccessful

Once the HVS-2000GUI has launched after the network connection, the MU connection will be established automatically (The "**LINK**" indication in the bottom right of the HVS-2000GUI window changes to "**CONNECTION**".)

3-4-1. Adding the GUI to Windows Firewall as Allowed Program

If the connection between the MU and PC is not established or Windows Firewall dialog box does not appear, follow the procedure below to add the HVS-2000GUI to the Windows Firewall as an allowed program.

- (1) Go to **Start > Control Panel > Windows Firewall > Allow a program or feature through Windows Firewall**.
- (2) Tap the **Change settings** button.
- (3) Check the **HVS-2000GUI** checkbox and tap **OK**.

3-4-2. Manually Selecting an MU

Normally the MU connection is automatically established, however, an MU can be manually connected by specifying the IP address (LAN2). To connect to another MU or the MU whose IP address has changed, proceed as follows:

◆ Specifying an IP address

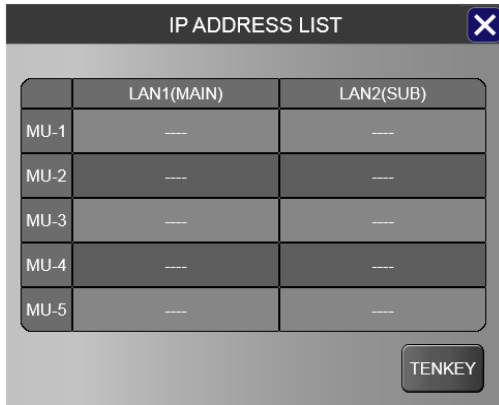


- (1) Display the [SETUP > HOME > GUI SETUP] menu.
- (2) Tap **CONTROL MU** to display parameters.
- (3) Tap **CONTROL MU IP ADDRESS** (left edge) and enter the MU IP address (LAN2).
- (4) Tap **RECONNECT** and **EXEC**. The specified MU IP address will pop-up. Tap **YES** to connect to the MU.

◆ Selecting the MU IP address from the IP address list

- (1) Display the [SETUP > HOME > GUI SETUP] menu.
- (2) Tap **CONTROL MU** to display parameters.
- (3) Tap **CONTROL MU IP ADDRESS** (left edge) to display the numeric keypad.
- (4) Tap **LIST** on the keypad.
- (5) An IP address list as shown below will appear.
- (6) Select the MU IP address to be connected.

- (7) Tap **RECONNECT** and **EXEC**. The specified MU IP address will pop-up. Tap **YES** to connect to the MU.



3-4-3. Changing the Connected MU IP Address

Open the [SETUP > SYSTEM > SYSTEM] menu and set the LAN1(MAIN) and LAN2(SUB) port settings.



Tap a parameter in the menu to display it in the Setting area. Tap the parameter value in the Setting area to change port settings using a pop-up keypad. After completing settings, click **Enter**.

LAN port change requires an MU reboot, which can be performed after finishing all other necessary settings by pressing **MU REBOOT**.

4. HVS-2000GUI Operation

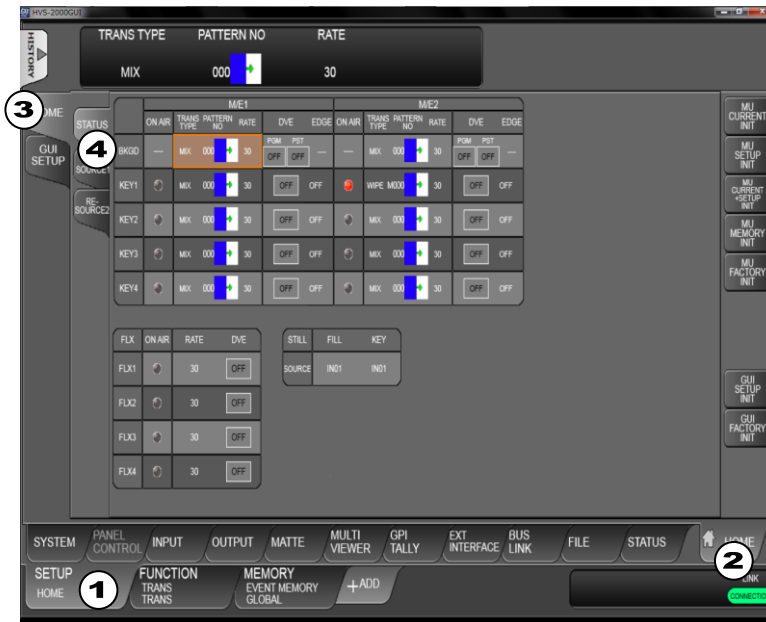
Refer to the “HVS-2000GUI Operation Manual” for more details on the menu and operation procedure.

4-1. Verifying Current Status

The HOME screen allows you to verify the M/E, FLEXaKEY and STILL status.

◆ **[SETUP > HOME > HOME > STATUS] menu**

If this tab screen does not appear on your display, tap tabs in the order (1) to (4) as shown in the figure below.



ON AIR	TRANS TYPE	PATTERN NO	RATE	DVE	EDGE	FILL	KEY
Lit red: On-air Unlit: Off-air	Displays current settings			Channel type when using DVE	Key edge type	Selected video sources	

◆ **[SETUP > HOME > HOME > RE-SOURCE 1] menu**



Symbol	Meaning
✓	This is being used.
X	Currently unavailable
---	Unavailable
	Available

◆ [SETUP > HOME > HOME > RE-SOURCE 2] menu



MELite / AUX

M/E Lite / AUX	BUS	AUX TRANS		AUX INHIBIT	
		ENABLE	SELECT	MU	OU
Lit: Active output bus between them	M/E Lite video source	AUX transition ON/OFF	Transition support bus	AUX image change locked (ON) / unlocked (OFF)	AUX bus buttons locked (ON)/ unlocked (OFF)

M/E UTILITY

XPT	MASK	SIDE PANEL	EFF BKGD	ANCILLARY PGM	ANCILLARY OUT1-3
Selected video source	Displays the M/E UTILITY usage status.				

AUX UTILITY

AUX UTILITY XPT	AUX UTILITY ASSIGN
Selected video source	Displays the AUX UTILITY usage status.

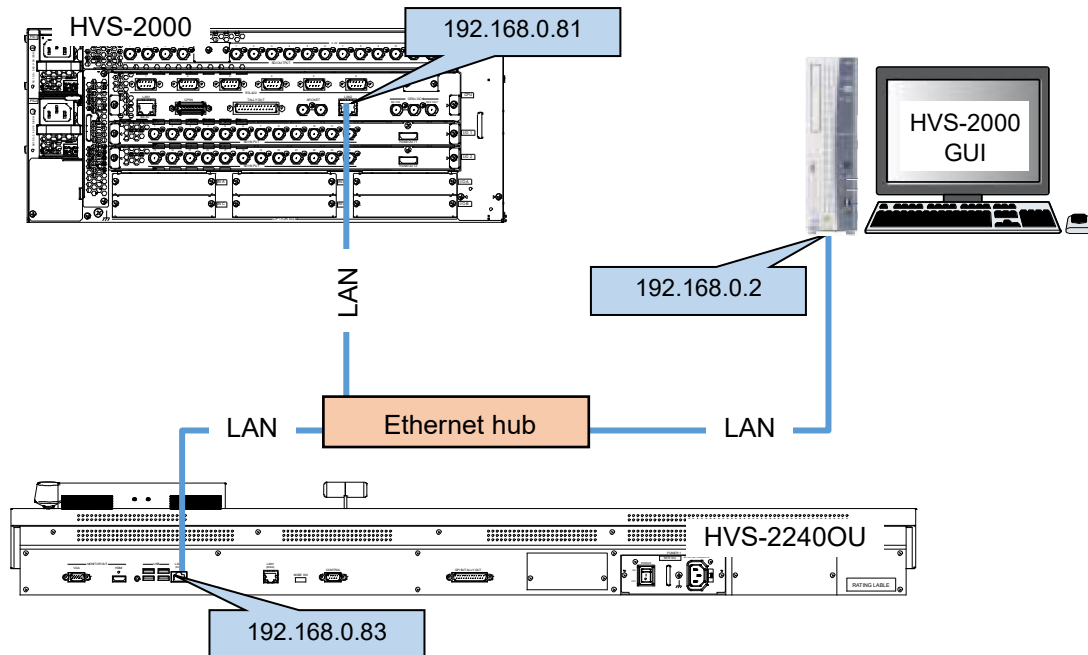
FLEXaKEY

ASSIGN
Displays the FLEXaKEY assignment status.

4-2. Linking with Control Panel

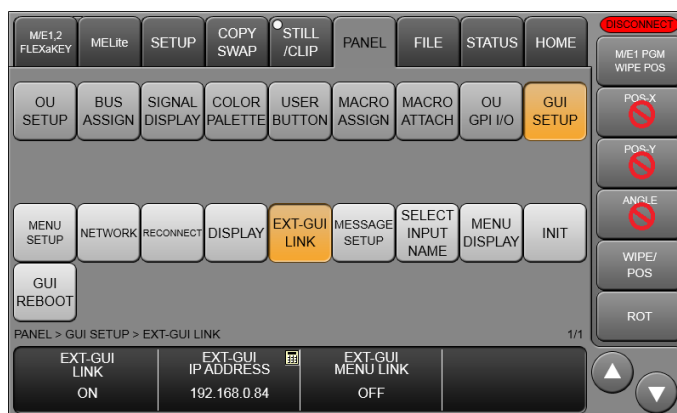
Normally the control panel setup settings cannot be performed from the HVS-2000GUI, and the control panel and GUI screen menus are not linked exactly, such as the link between Mini Menu and Midas Touch menus.

If configuring the system as shown below using an Ethernet hub, the GUI screen menus can manage all menu parameters including control panel setup settings, in addition, the control panel and GUI screen menus can be exactly linked to each other.



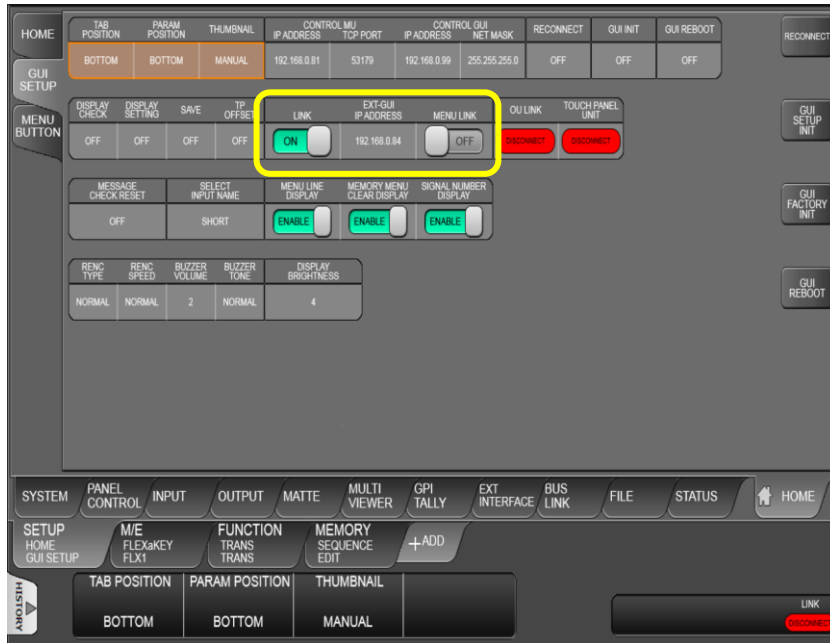
◆ If Setting in the Control Panel (Mini Menu)

- (1) Open the [PANEL > GUI SETUP > EXT-GUI LINK] menu.
- (2) Specify the HVS-2000TPUS IP address (192.168.0.2 in the connection example) under **EXT-GUI IP ADDRESS**. (Selecting **LIST** in the IP address setting dialog allows you to display the list of active GUI IP addresses and to select an address from the list.)
- (3) Turn **EXT-GUI LINK** to **ON**.
- (4) To link the control panel (MiniMenu) and HVS-2000TPUS menus, turn **EXT-GUI MENU LINK** to **ON**. Otherwise, leave it **OFF**.



◆ **If Setting in the HVS-2000GUI**

- (1) Open the [HOME > GUI SETUP] menu.
- (2) Specify the HVS-2240OU (Mini Menu) IP address (192.168.0.83 in the connection example) under **EXT-GUI IP ADDRESS**.
- (3) Turn **EXT-GUI LINK** to **ON**.
- (4) To link the control panel (MiniMenu) and HVS-2000TPUS menus, turn **EXT-GUI MENU LINK** to **ON**. Otherwise, leave it **OFF**.



4-3. Saving Data (from Switcher to USB Drive)

The switcher is capable of storing operational data, such as system and bus setting data, still images, WIPE and DVE modifications and event data, to USB flash drives on the PC. The following procedure shows how to download all setting data.

- (1) Insert a USB flash drive into a USB port on the PC.
- (2) Open the [SETUP > FILE > SAVE] menu.
- (3) Tap **USB E:\.** (USB drive to which the data is going to be backed up. Drive letter may change depending on the system configuration)
- (4) Tap **MU ALL.**
- (5) Tap the **MU ALL DATA** icon in the left side of the screen.
- (6) Tap on **YES** on the confirmation dialog to save the data to the USB drive.



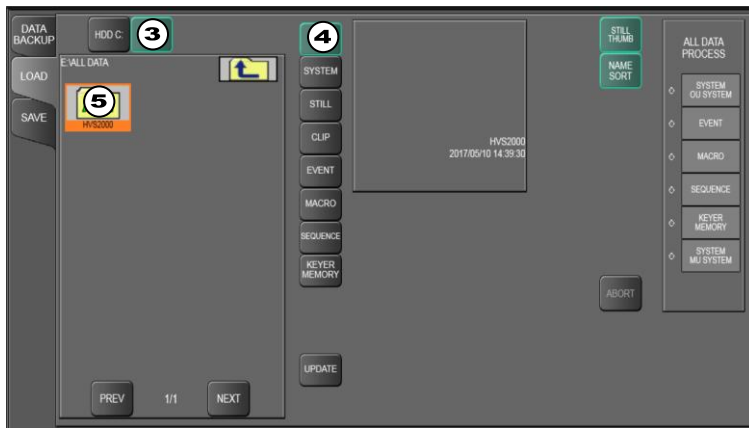
IMPORTANT

Do not remove the USB drive while the access lamp is flashing. The time at which data is saved to a USB drive is also recorded according to the switcher internal clock.

4-4. Loading Data (from USB Drive to Switcher)

The following procedure shows how to upload and apply all setting data stored in the USB flash drive.

- (1) Insert the USB drive in which the all data is stored, into a USB port on the PC.
- (2) Open the [SETUP > FILE > LOAD] menu.
- (3) Tap **USB E:\.** (USB drive to which the file is stored. Drive letter may change depending on the system configuration.)
- (4) Tap **MU ALL.**
- (5) Select the folder to which the data is to be stored (HVS-2000) to load all setting data.
- (6) Reboot the system.



IMPORTANT

Once the saved system data (files with "all" or "sys" extension) finishes loading, you will have to restart the switcher. (The unit should be powered off then powered ON.) The system data is applied only after the switcher is restarted.



FOR-A COMPANY LIMITED

Head Office 3-8-1 Ebisu, Shibuya-ku, Tokyo 150-0013, Japan
Overseas Division Tel: +81(0)3 3446 3936 Fax: +81(0)3 3446 1470
Japan Branch Offices Osaka/Okinawa/Fukuoka/Hiroshima/Nagoya/Sendai/Sapporo
R&D/Production Sakura Center/Sapporo Center

FOR-A Corporation of America

11155 Knott Ave., Suite G&H, Cypress, CA 90630, USA.
Tel: +1 714 894 3311 Fax: +1 714 894 5399

FOR-A Corporation of America East Coast Office

2 Executive Drive, Suite 670, Fort Lee Executive Park, Fort Lee, NJ 07024, USA
Tel: +1 201 944 1120 Fax: +1 201 944 1132

FOR-A Corporation of America Distribution & Service Center

2400 N.E. Waldo Road, Gainesville, FL 32609, USA
Tel: +1 352 371 1505 Fax: +1 352 378 5320

FOR-A Corporation of America Miami Office

8333 North West 53rd Street Suite 427 Doral, FL 33166, USA
Tel: +1 305 931 1700 Fax: +1 714 894 5399

FOR-A Corporation of Canada

1131A, Leslie Street Suite 209, Toronto, Ontario M3C 2J6, Canada
Tel: +1 416 977 0343 Fax: +1 416 977 0657

FOR-A Europe S.r.l.

Via Volturno 37, 20861 Brugherio MB, Italy
Tel: +39 039 91 64 811 Fax: +39 039 878 140

FOR A UK Limited

Trident Court, 1 Oakcroft Road, Chessington, KT9 1BD, UK
Tel: +44 (0)20 3044 2935 Fax: +44(0)20 3044 2936

FOR-A Italia S.r.l.

Via Volturno 37, 20861 Brugherio MB, Italy
Tel: +39 039 881 086/103 Fax: +39 039 878 140

FOR-A Corporation of Korea

1007, 57-5, Yangsan-ro, Yeongdeungpo-gu, Seoul 150-103, Korea
Tel: +82 (0)2 2637 0761 Fax: +82 (0)2 2637 0760

FOR-A China Limited

708B Huateng Building, No. 302, 3 District, Jinsong, Chaoyang, Beijing 100021, China
Tel: +86 (0)10 8721 6023 Fax: +86 (0)10 8721 6033

FOR-A Middle East-Africa Office

Dubai Media City, Aurora Tower, Office 1407, P.O. Box 502688, Dubai, UAE
Tel: +971 (0)4 551 5830 Fax: +971 (0)4 551 5832

Agiv (India) Private Limited (FOR-A India)

2nd Floor, Valecha Chambers, Link Road, Andheri(W), Mumbai 400053
Tel: +91-22-26733623 Fax: +91-22-26393415