



FRC PREMIERE PRO EXPORT PLUG-IN



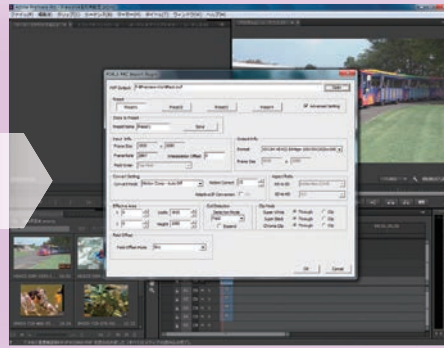
High-quality video format converter/ MXF exporter plug-in software for Adobe Premiere Pro CC/CS6 Windows

- Frame rate converter
- Includes upconversion, downconversion, and crossconversion (1080i↔720p)
- Two conversion modes: vector motion compensation and linear conversion
- Includes industry leading scene cut detection
- Upconversion uses motion adaptive interlace-to-progressive conversion

Workflow



Premiere Pro

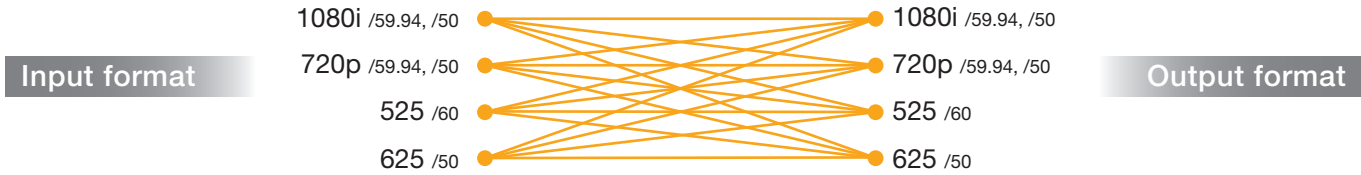


Time sequence

**FRC Premiere Pro
Export Plug-in**

Frame rate/
video format conversion

Frame rate format map



System requirements

Operating system	Windows 7 (SP1), Windows 8, Windows 8.1 (64-bit)
CPU	Intel Core2 Duo, AMD Phenom II
Memory	4 GB or more (recommended: 8 GB or more)
Capacity	4 GB or more (recommended: 10 GB or more)
GPU	NVIDIA CUDA-compatible, VRAM 1 GB or higher (Quadro series are recommended)
Sound card	Microsoft WDM or ASIO-compatible
Software	Windows Adobe Premiere Pro CS6 or CC, QuickTime 7.6.6
Others	Internet connectivity (required for license verification and online services)
Screen resolution	1280 x 800 pixels or higher

- Windows is a registered trademark of Microsoft Corporation in the United States and other countries.
- Adobe Premiere Pro is a registered trademark of Adobe Systems Incorporated.

Specifications

Output format*1	XDCAM IMX	625/50i*2, 525/59.94i*2
	XDCAM HD	35 Mbps 1080/50i, 59.94i, 720/50p, 59.94p
	XDCAM HD422	50 Mbps 1080/50i, 59.94i, 720/50p, 59.94p
	P2 AVC-Intra 100	100 Mbps 1080/50i, 59.94i, 720/50p, 59.94p
	P2 DVCPRO 50	50 Mbps 625/50i*2, 525/59.94i*2
Aspect ratio (HD to SD downconversion)	letter box (16:9)	
	letter box (14:9)	
	letter box (13:9)	
	zoom (4:3) squeeze	
Aspect ratio (SD to HD upconversion)	4:3	
	zoom (16:9)	
	zoom (14:9)	
	zoom (13:9)	
	squeeze	

*1 Supported codecs can be selected as options *2 SD format

FOR-A COMPANY LIMITED

Head Office: 3-8-1 Ebisu, Shibuya-ku, Tokyo 150-0013, Japan

FOR-A Corporation of America: 11155 Knott Ave., Suite G&H, Cypress, CA 90630, U.S.A.

FOR-A Corporation of America East Coast Office: 2 Executive Drive, Suite 670, Fort Lee Executive Park, Fort Lee NJ 07024, U.S.A.

FOR-A Corporation of America Distribution & Service Center: 2400 N.E. Waldo Road, Gainesville, FL 32609, U.S.A.

FOR-A Corporation of America Miami Office: 5200 Blue Lagoon Drive, Suite 760, Miami, FL 33126, U.S.A.

FOR-A Corporation of Canada: 346A Queen Street West, Toronto, Ontario M5V 2A2, CANADA

FOR-A Europe S.r.l.: Via Volturmo, 37, 20861 Brugherio MB, Italy

FOR-A UK Limited: Trident Court, 1 Oakcroft Road, Chessington, KT9 1BD, UK

FOR-A Italia S.r.l.: Via Volturmo, 37, 20861, Brugherio MB, Italy

FOR-A Corporation of Korea: 1007, 57-5, Yangsan-ro, Yeongdeungpo-gu, Seoul 150-103, Korea

FOR-A China Limited: 708B Huateng Building, No. 302, 3 District, Jinsong, Chaoyang, Beijing 100021, China

FOR-A Middle East-Africa Office: Jebel Ali Free Zone, LOB-16, Office 619, P.O. Box 261914, Dubai, U.A.E.

URL: <http://www.for-a.com/>

Tel : +81 (0)3-3446-3936 Fax : +81 (0)3-3446-1470

Tel: +1-714-894-3311 Fax: +1-714-894-5399

Tel: +1-201-944-1120 Fax: +1-201-944-1132

Tel: +1-352-371-1505 Fax: +1-352-378-5320

Tel: +1-305-931-1700 Fax: +1-305-264-7890

Tel: +1-416-977-0343 Fax: +1-416-977-0657

Tel: +39-039-879-778 Fax: +39-039-878-140

Tel: +44 (0)20-3044-2935 Fax: +44(0)20-3044-2936

Tel: +39-039-881-086/103 Fax: +39-039-878-140

Tel: +82 (0)2-2637-0761 Fax: +82 (0)2-2637-0760

Tel: +86 (0)10-8721-6023 Fax: +86 (0)10-8721-6033

Tel: +971 4 887 6712 Fax: +971 4 887 6713

ISO 9001 and 14001 certified (Sakura R&D)

© 2014 FOR-A Company Ltd. FOR-A is a registered trademark of FOR-A Company Ltd. Design and specifications subject to change without notice. Printed in Japan. 1403FJ2A