

HD/SD Logo/Title Generator

LTG-50HS

The LTG-50HS is a HD/SD logo/title generator capable of superimposing camera titles, date and time, logos, and graphics on input video signals.



Character displays

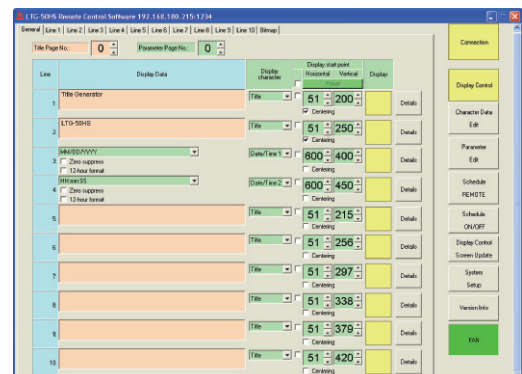
- Fonts: Two types of display fonts (Gothic and Roman)
- Text: Up to 40 characters x 10 lines per page
- Pages: Up to 256 pages with max. 400 characters
- Font size setting: Five font size settings by line
- Font edge setting: Font edge ON/OFF and change colors by line
- Font color setting
- Text transparency setting
- Display position: Adjustable within 80% of the effective screen area
- Date and time display (with external correction input)

Special displays

- Remote control on text, color, and other settings
- Bitmap character display function that enables logos and graphics to be displayed at any selected location
- Standard configuration features a LAN interface as well as RS-232C for allowing easy display setting and display character registration from a PC
- Includes software for easy typing and setting on PC as well as weekly scheduling of page control



Display Image



Control Software Image

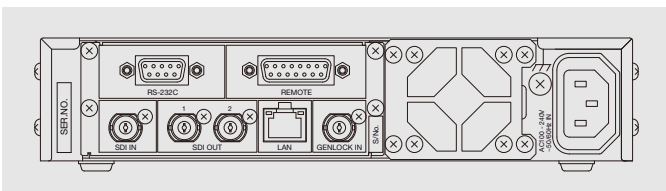
Specifications

Standard	HD-SDI: 1080/60i, 1080/59.94i, 1080/50i, 1080/30p, 1080/29.97p, 1080/25p, 1080/24p, 1080/24PsF, 1080/23.98p, 1080/23.98PsF, 720/60p, 720/59.94p, 720/50p *1080/25PsF is supported by 1080/50i, 1080/30PsF by 1080/60i and 1080/29.97PsF by 1080/59.94i SD: 525/60, 625/50	
Video Input	HD-SDI: 1.485Gbps or 1.485/1.001Gbps or SD-SDI: 270Mbps, 75Ω, BNC, 1 input (bypass through to Video outputs supported)	
Genlock Input	BB: NTSC: 0.429Vp-p/PAL: 0.45p-p or Tri-level Sync: ±0.3V, 75Ω, BNC, 1 input	
Pull-in Range	Within ±0.5H (to the genlock phase)	
Video Outputs	HD-SDI: 1.485Gbps or 1.485/1.001Gbps or SD-SDI: 270Mbps, 75Ω, BNC, 2 outputs (1 line x 2 connectors) *The ancillary data including embedded audio will be passed through.	
VO Delay	- Input Lock settings: Minimum delay (*varies depending on the video format) - GenLock settings (BB or TRI): 1H (when the input and genlock phases match)	
Display Characters	Number of characters: 40 characters, 10 lines/page	Number of pages: Max. 256 pages *400 characters/page
	Characters: Alphabetical, Numeric and Symbol (ISO8859-1)	Fonts: 2 types (Gothic and Roman)
	Character sizes: 5 size (line units)	Display position: Adjustable within 80% of the effective screen area (line units)
	Character color: User selectable (line units, Body and Edge)	
	Clock display: 2 lines	
	- Display format: Year, month, day, hour, minute, second (24-hour display / 12-hour display selectable)	
	- Clock Accuracy: ±10 seconds or less per month (0°C - 40°C)	
	Bitmap display: Logo and image files can be displayed at any selected position	
Interfaces	REMOTE input: D-sub 15-pin (female), 1 port	
	- Switch-page: TTL negative logic, level signal or make contact input pulse width 100ms or more 8 inputs	
	- Time correction input: TTL negative logic or make contact input pulse width 100ms or more 1 input	
	- Fan alarm output: Make contact relay, Max 24VDC 100mA, 1 output	
	RS-232C: 9-pin D-sub (male), 1 port	
	LAN: 100Base-TX, RJ-45 (Category 5), 1 port	
Title Display	- Character limit: Max. 40 characters x 10 lines	- Page limit: 256 pages
	- Character set: ISO8859-1 (Latin-1) character set	- Font type: Roman and Gothic
	- Font sizes: 5 levels (per-line setting)	- Display position: Per-line setting
	- Title color: Per-line setting (Text and background: full color)	
Data / Time Display	Display line selectable (Up to 2 lines), Year, month, day, hour, minute and second, 24-hour display / 12-hour display switchable * Display format selectable	
Clock precision	Less than ±10 seconds per month (at 0°C to 40°C)	
Data Backup	Lithium battery (Clock data), Stored to FLASH memory (Program erase cycle limit: appr. 200000 P/E cycles) (Except clock data)	
Temperature / Humidity	0°C - 40°C / 30% - 90% (no condensation)	
Power / Consumption	100VAC - 240VAC ±10% 50/60Hz / Approx. 27VA (25W) (at 100VAC)	
Dimensions / Weight	212 (W) x 44 (H) x 350 (D) mm / Approx. 2.5kg	
Consumables	Backup battery: CR-2032 Replace every 5 years (at room temp), Cooling fan: P-1439 Replace every 5 years (at room temp)	
Accessories	Operation manual, AC cord, Control Software installation CD-ROM (Windows)	

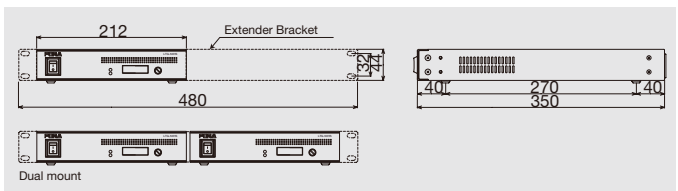
Remote Control Software System Requirement

OS	Windows XP SP2 (32 bit) (Professional), Windows Vista SP1 (32 bit) (Business)
CPU	Pentium III 600MHz or higher, Pentium III 800MHz or higher
Memory	512MB or more recommended
Display	Resolution: 1024 x 768 pixel or more recommended
Software	NET Framework 2.0, Windows Installer 3.1

Rear Panel



External Dimensions



FOR-A COMPANY LIMITED

Head Office : 3-8-1 Ebisu, Shibuya-ku, Tokyo 150-0013, Japan

FOR-A Corporation of America Corporate Office : 11155 Knott Ave., Suite G&H, Cypress, CA 90630, USA

FOR-A Corporation of America East Coast Office : 2 Executive Drive, Suite 670, Fort Lee Executive Park, Fort Lee NJ 07024, USA

FOR-A Corporation of America Distribution & Service Center : 2400 N.E. Waldo Road, Gainesville, FL 32609, USA

FOR-A Latin America & the Caribbean : 5200 Blue lagoon Drive, Suite 760, Miami, FL 33126, USA

FOR-A Corporation of Canada : 346A Queen Street West, Toronto, Ontario M5V 2A2, CANADA

FOR-A UK Limited : UNIT C71, Barwell Business Park, Leatherhead Road, Chessington Surrey, KT9 2NY, UK

FOR-A Italia S.r.l. : Via Volturmo, 37, 20047, Brughiero MB, ITALY

FOR-A Corporation of Korea : 801 Dangsang Bld., 53-1 Dangsang-dong, Youngdeungpo-gu, Seoul 150-800, KOREA

FOR-A China Limited : 708B Huateng Building, No. 302, 3 District, Jinsong, Chaoyang, Beijing 100021, CHINA

ISO 9001 and 14001 certified (Sakura R&D)

Homepage: <http://www.for-a.com/>

Tel : +81 (0)3-3446-3936 Fax : +81 (0)3-3446-1470

Tel: +1 714-894-3311 Fax: +1 714-894-5399

Tel: +1 201-944-1120 Fax: +1 201-944-1132

Tel: +1 352-371-1505 Fax: +1 352-378-5320

Tel: +1-305-931-1700 Fax: +1-305-264-7890

Tel: +1 416-977-0343 Fax: +1 416-977-0657

Tel: +44 (0)20-8391-7979 Fax: +44 (0)20-8391-7978

Tel: +39 039-881-086/103 Fax: +39 039-878-140

Tel: +82 (0)2-2637-0761 Fax: +82 (0)2-2637-0760

Tel: +86-(0)10-8721-6023 Fax: +86-(0)10-8721-6033