



# IfCalibSTD

Camera calibration software (plug-in software)

\*Brainstorm eStudio is required for usage.

In indoor and outdoor virtual studios and RCG systems, the process of eliminating any distortion between computer graphics (CG) and camera video is called camera calibration and is an extremely important and advanced operation. The Brainstorm eStudio plug-in software known as IfCalibSTD can be used to make accurate calibrations quickly and easily. The simplicity and advanced functions of this software significantly reduces the burdens on operators.

## Main Features

### ■ Superior user interface

- Multiple Brainstorm eStudio transmitters can be controlled from the GUI.
- Software can be started at multiple locations to enable operations running in parallel and status monitoring.

### ■ Lens calibration

- Calibration can be performed that matches the field of view, nodal point, depth of field, and other parameters of the specific lens.
- Support for defocus control based on the depth of field (when using AVCGP by Panasonic)

### ■ Camera position calibration

- Enables flexible offset settings using two different coordinate systems
- Includes automatic calculation algorithms for the position offset

### ■ Other features

- Supports units such as meter, centimeter, yard, shaku, and others
- Accurate calibration is assured by simply adjusting the camera as instructed by the on-screen wizard.
- Supports a wide range of sensor types
- Supports indoor and outdoor virtual studios and RCG systems

### ■ Licenses

IfCalibSTD uses a licensing system. Two types of licenses are available according to usage.

- IfCalibSTD Proc  
 This is a license for the IfCalibSTD main software. It can be installed as a Brainstorm eStudio plug-in.
- IfCalibSTD GUI  
 This is a GUI license for controlling IfCalibSTD. It is needed when starting the software in multiple locations.

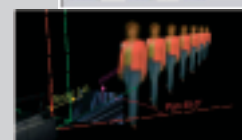
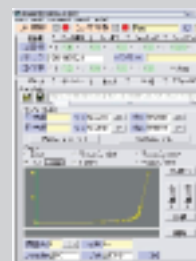


### ■ Lens calibration

Detailed adjustments are performed on the lens zoom and focus for linkage with CG. Unique algorithms and operation screens are used to enable adjustment in a short time.

### ■ Defocus adjustment

The depth of field for the CG can be adjusted and defocus can be applied to match the lens zoom and focus (when using AVCGP by Panasonic).

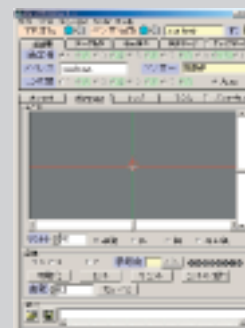
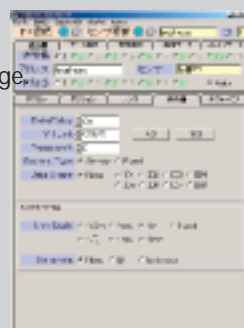


### ■ Position offset settings

An offset is applied to the position and angle data from the sensor to match the actual image. Offset management is possible in three coordinate systems.

### ■ Automatic calculation of position and angle offset

The camera position is automatically calculated from a small number of marker points. This function can be used not only within the studio, but also at golf courses and other playing fields.



### ■ Various adjustments

This is the screen where the screen aspect ratio, delay, and unit settings (cm, m, yard, shaku, etc.) are made.